

# 积层贴片陶瓷片式电容器

## 一般用

### C 系列

Type: C0402[EIA CC01005]  
C0603[EIA CC0201]  
C1005[EIA CC0402]  
C1608[EIA CC0603]  
C2012[EIA CC0805]  
C3216[EIA CC1206]  
C3225[EIA CC1210]  
C4532[EIA CC1812]  
C5750[EIA CC2220]

Issue date: September 2011

●记载内容，在没有予告的情况下有可能改进和变更，请予以谅解。

●RoHS 指令的对应：表示除了依据 EU Directive 2002/95/EC 免除的用途之外，未使用铅，镉，汞，六价铬及特定溴系难燃剂 PBB，PBDE 等。

# 使用注意事项

使用本产品前, 请务必阅读

## 安全注意事项

### 注意

1. 计划将本商品目录中记载的产品用于可能对人身安全或对社会造成重大损失的用途时, 请务必通知本公司的销售窗口。
2. 本商品目录中记载的产品因改良及其他原因可能在不经预告的情况下进行变更或停止供应。
3. 关于本商品目录中记载的产品, 本公司备有记载了各产品的规格及安全注意事项的“交货规格书”。在选用产品时, 建议签定交货规格书。
4. 在出口本商品目录中记载的产品时, 有时会被归为“外汇及外贸管理法”中规定的管制货物等。在这种情况下, 需要有依据该法规定的出口许可。
5. 关于本商品目录的内容, 未经本公司许可不得擅自转载或复制。
6. 因使用本商品目录中记载的产品而发生涉及本公司或第三者的知识产权及其他权利的问题时, 本公司对此将不承担责任。并且, 本公司不对该等权利的实施权办理许可。
7. 本商品目录适用于从本公司或本公司的正规代理商购买的产品。从其他第三者购买的产品不在适用范围之内。
8. 本商品目录中记载的内容是根据截至 2011 年 9 月的情况而编制的。

# 积层贴片陶瓷片式电容器 一般用

RoHS指令对应产品

## C系列

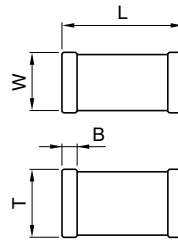
### 特点

- 随着陶瓷电介质的薄层化和积层技术的进步，连电解电容领域也实现了静电电容值。
- 仅由陶瓷和金属构成，结构单一，故寿命长，具有高的可靠性。
- ESL小，频率特性良好，能够设计接近理论值的电路。
- ESR小，自我发热小，抗脉动特性优越。

### 用途示例

- 普通电子设备的去耦，平滑电路
- 时间常数，共振电路，耦合电路（推荐CH，C0G特性。可在薄膜电容器之上替换而成）

### 形状・尺寸



### 关于尺寸标识

在品名内标识各产品的尺寸。

### 尺寸L×W

品名内的4位数值即表示尺寸。  
具体数值请参照下表。

单位：mm

尺寸代码	L	W	B
0402	0.4±0.02	0.2±0.02	0.07min.
0603	0.6±0.03	0.3±0.03	0.1min.
1005	1.0±0.05	0.5±0.05	0.1min.
1608	1.6±0.1	0.8±0.1	0.2min.
2012	2.0±0.2	1.25±0.2	0.2min.
3216	3.2±0.2	1.6±0.2	0.2min.
3225	3.2±0.4	2.5±0.3	0.2min.
4532	4.5±0.4	3.2±0.4	0.2min.
5750	5.7±0.4	5.0±0.4	0.2min.

• 尺寸公差表示的是具有代表性的数值

### 产品厚度T

品名末尾括弧内的数值即表示产品厚度。  
具体数值请参照电容取得范围表。

●要了解没有记载的电容量及产品说明，请向本公司询问。

● RoHS 指令的对应：表示除了依据 EU Directive 2002/95/EC 免除的用途之外，未使用铅，镉，汞，六价铬及特定溴系难燃剂 PBB，PBDE 等。

· 记载内容，在没有予告的情况下有可能改进和变更，请予以谅解。  
使用本商品目录时，请务必阅读开头的注意事项。

## 产品名称的识别法

C 1005 CH 1H 100 C ( 050 B A )  
 (1) (2) (3) (4) (5) (6) (7) (8) (9)

### (1) 系列名称

### (2) 尺寸L×W

0402	0.4×0.2mm
0603	0.6×0.3mm
1005	1.0×0.5mm
1608	1.6×0.8mm
2012	2.0×1.25mm
3216	3.2×1.6mm
3225	3.2×2.5mm
4532	4.5×3.2mm
5750	5.7×5.0mm

### (3) 电容温度特性

#### 种类1 (温度补偿用)

温度特性	温度系数	温度范围
C0G	0±30ppm/°C	-55 to +125°C
CH	0±60ppm/°C	-25 to +85°C

#### 种类2 (高介电率类)

温度特性	温度系数	温度范围
X5R	±15%	-55 to +85°C
X6S	±22%	-55 to +105°C
X7R	±15%	-55 to +125°C
JB	±10%	-25 to +85°C
Y5V	+22, -82%	-30 to +85°C
JF	+30, -80%	-25 to +85°C

### (4) 额定电压Edc

0G	4V
0J	6.3V
1A	10V
1C	16V
1E	25V
1V	35V
1H	50V

### (5) 标称电容

以pF(微微法拉)为单位, 并用三位数表示。

最初两位数: 有效数字

最后一位数: 接在有效数字后的零数

含有小数点时用R表示。

0R5	0.5pF
R75	0.75pF
010	1pF
100	10pF
471	470pF
102	1,000pF
333	33,000pF
474	470,000pF
225	2,200,000pF (2.2μF)

### (6) 电容公差

记号	容差	适用容量范围
B	±0.1pF	10pF以下
C	±0.25pF	
D	±0.5pF	
J	±5%	
K	±10%	10pF以上
M	±20%	
Z	+80, -20%	

### (7) 尺寸T

以mm为单位, 并用三位数表示。

第二, 第三位分别表示小数点后的第一, 第二位。

050	0.50mm
085	0.85mm
125	1.25mm

### (8) 包装形式

A	φ178mm滚筒 4mm间距
B	φ178mm滚筒 2mm间距
C	φ178mm滚筒 1mm间距
D	φ330mm滚筒 4mm间距
E	φ330mm滚筒 2mm间距
F	φ330mm滚筒 1mm间距
H	散装(袋装)
J	φ330mm滚筒 8mm间距
K	φ178mm滚筒 8mm间距

### (9) 本公司内部管理记号

在2011年8月以后发行的产品目录上, 我们将在订货名称[产品目录上记载的品名]的末尾附上(), 在其中表达产品厚度和包装规格。由于以前的订货品名不能明确表达产品厚度, 包装, 我们已改变品名标识方法, 消除了由此引发的不便。

并注意, 交货标签上的标识与订货品名末尾的5位不同。  
 交货品名与以前一样, 没有改变。

(例如)

产品目录发行日	订货品名(产品目录上的标识)	交货品名(交货标签上的标识)
2011年7月以前	C1608X5R1C105K	C1608X5R1C105KT000N
2011年8月以后	C1608X5R1C105K(080AA)	C1608X5R1C105KT000N

●要了解没有记载的电容量及产品说明, 请向本公司询问。

●RoHS指令的对应: 表示除了依据EU Directive 2002/95/EC免除的用途之外, 未使用铅, 镉, 汞, 六价铬及特定溴系难燃剂PBB, PBDE等。

·记载内容, 在没有予告的情况下有可能改进和变更, 请予以谅解。  
 使用本商品目录时, 请务必阅读开头的注意事项。

**电容取得范围: 种类1 (温度补偿用)**
**温度特性: C0G(0±30ppm/°C)**

电容	尺寸 L×W	产品厚度 T(mm)	电容 容差	品名			
				额定电压 Edc: 50V	额定电压 Edc: 35V	额定电压 Edc: 25V	额定电压 Edc: 16V
0.5pF	0402	0.20±0.02	±0.25pF	C0402C0G1C0R5C(020BA)			
	0603	0.30±0.03	±0.25pF	C0603C0G1H0R5C(030BA)		C0603C0G1E0R5C(030BA)	
	1005	0.50±0.05	±0.1pF	C1005C0G1H0R5B(050BA)			
	1608	0.80±0.10	±0.25pF	C1005C0G1H0R5C(050BA)			
0.75pF	0402	0.20±0.02	±0.25pF	C1608C0G1H0R5C(080AA)			
	0603	0.30±0.03	±0.25pF	C0603C0G1HR75C(030BA)		C0603C0G1ER75C(030BA)	
	1005	0.50±0.05	±0.1pF	C1005C0G1HR75B(050BA)			
	1608	0.80±0.10	±0.25pF	C1005C0G1HR75C(050BA)			
1pF	0402	0.20±0.02	±0.25pF	C1608C0G1HR75C(080AA)			
	0603	0.30±0.03	±0.25pF	C0603C0G1H010C(030BA)		C0603C0G1E010C(030BA)	
	1005	0.50±0.05	±0.1pF	C1005C0G1H010B(050BA)			
	1608	0.80±0.10	±0.25pF	C1005C0G1H010C(050BA)			
1.5pF	0402	0.20±0.02	±0.25pF	C1608C0G1H010C(080AA)			
	0603	0.30±0.03	±0.25pF	C0603C0G1H010C(030BA)		C0603C0G1E010C(030BA)	
	1005	0.50±0.05	±0.1pF	C1005C0G1H1R5B(050BA)			
	1608	0.80±0.10	±0.25pF	C1005C0G1H1R5C(050BA)			
2pF	0402	0.20±0.02	±0.25pF	C1608C0G1H1R5C(080AA)			
	0603	0.30±0.03	±0.25pF	C0603C0G1H020C(030BA)		C0603C0G1E020C(030BA)	
	1005	0.50±0.05	±0.1pF	C1005C0G1H020B(050BA)			
	1608	0.80±0.10	±0.25pF	C1005C0G1H020C(050BA)			
3pF	0402	0.20±0.02	±0.25pF	C1608C0G1H020C(080AA)			
	0603	0.30±0.03	±0.25pF	C0603C0G1H030C(030BA)		C0603C0G1E030C(030BA)	
	1005	0.50±0.05	±0.1pF	C1005C0G1H030B(050BA)			
	1608	0.80±0.10	±0.25pF	C1005C0G1H030C(050BA)			
4pF	0402	0.20±0.02	±0.25pF	C1608C0G1H030C(080AA)			
	0603	0.30±0.03	±0.25pF	C0603C0G1H040C(030BA)		C0603C0G1E040C(030BA)	
	1005	0.50±0.05	±0.1pF	C1005C0G1H040B(050BA)			
	1608	0.80±0.10	±0.25pF	C1005C0G1H040C(050BA)			
5pF	0402	0.20±0.02	±0.25pF	C1608C0G1H040C(080AA)			
	0603	0.30±0.03	±0.25pF	C0603C0G1H050C(030BA)		C0603C0G1E050C(030BA)	
	1005	0.50±0.05	±0.1pF	C1005C0G1H050B(050BA)			
	1608	0.80±0.10	±0.25pF	C1005C0G1H050C(050BA)			
6pF	0402	0.20±0.02	±0.5pF	C1608C0G1H050C(080AA)			
	0603	0.30±0.03	±0.5pF	C0603C0G1H060D(030BA)		C0603C0G1E060D(030BA)	
	1005	0.50±0.05	±0.25pF	C1005C0G1H060C(050BA)			
	1608	0.80±0.10	±0.5pF	C1005C0G1H060D(050BA)			
7pF	0402	0.20±0.02	±0.5pF	C1608C0G1H060C(080AA)			
	0603	0.30±0.03	±0.5pF	C0603C0G1H070D(030BA)		C0603C0G1E070D(030BA)	
	1005	0.50±0.05	±0.25pF	C1005C0G1H070C(050BA)			
	1608	0.80±0.10	±0.5pF	C1005C0G1H070D(050BA)			
8pF	0402	0.20±0.02	±0.5pF	C1608C0G1H070C(080AA)			
	0603	0.30±0.03	±0.5pF	C0603C0G1H080D(030BA)		C0603C0G1E080D(030BA)	
	1005	0.50±0.05	±0.25pF	C1005C0G1H080C(050BA)			
	1608	0.80±0.10	±0.5pF	C1005C0G1H080D(050BA)			
9pF	0402	0.20±0.02	±0.5pF	C1608C0G1H080C(080AA)			
	0603	0.30±0.03	±0.5pF	C0603C0G1H090D(030BA)		C0603C0G1E090D(030BA)	
	1005	0.50±0.05	±0.25pF	C1005C0G1H090C(050BA)			
	1608	0.80±0.10	±0.5pF	C1005C0G1H090D(050BA)			

●要了解没有记载的电容量及产品说明, 请向本公司询问。

● RoHS 指令的对应: 表示除了依据 EU Directive 2002/95/EC 免除的用途之外, 未使用铅, 镉, 汞, 六价铬及特定溴系难燃剂 PBB, PBDE 等。

· 记载内容, 在没有予告的情况下有可能改进和变更, 请予以谅解。  
使用本商品目录时, 请务必阅读开头的注意事项。

**电容取得范围: 种类1 (温度补偿用)**
**温度特性: C0G(0±30ppm/°C)**

电容	尺寸 L×W	产品厚度 T(mm)	电容 容差	品名			
				额定电压 Edc: 50V	额定电压 Edc: 35V	额定电压 Edc: 25V	额定电压 Edc: 16V
10pF	0402	0.20±0.02	±0.5pF				C0402C0G1C100D(020BA)
	0603	0.30±0.03	±0.5pF	C0603C0G1H100D(030BA)		C0603C0G1E100D(030BA)	
	1005	0.50±0.05	±0.25pF	C1005C0G1H100C(050BA)			
			±0.5pF	C1005C0G1H100D(050BA)			
12pF	1608	0.80±0.10	±0.25pF	C1608C0G1H100C(080AA)			
			±0.5pF	C1608C0G1H100D(080AA)			
	0402	0.20±0.02	±5%				C0402C0G1C120J(020BA)
	0603	0.30±0.03	±5%	C0603C0G1H120J(030BA)		C0603C0G1E120J(030BA)	
15pF	1005	0.50±0.05	±5%	C1005C0G1H120J(050BA)			
	1608	0.80±0.10	±5%	C1608C0G1H120J(080AA)			
			±5%				C0402C0G1C150J(020BA)
	0402	0.20±0.02	±5%				
18pF	0603	0.30±0.03	±5%	C0603C0G1H150J(030BA)		C0603C0G1E150J(030BA)	
	1005	0.50±0.05	±5%	C1005C0G1H150J(050BA)			
	1608	0.80±0.10	±5%	C1608C0G1H150J(080AA)			
			±5%				
22pF	0603	0.30±0.03	±5%	C0603C0G1H180J(030BA)		C0603C0G1E180J(030BA)	
	1005	0.50±0.05	±5%	C1005C0G1H180J(050BA)			
	1608	0.80±0.10	±5%	C1608C0G1H180J(080AA)			
			±5%				
27pF	0603	0.30±0.03	±5%	C0603C0G1H220J(030BA)		C0603C0G1E220J(030BA)	
	1005	0.50±0.05	±5%	C1005C0G1H220J(050BA)			
	1608	0.80±0.10	±5%	C1608C0G1H220J(080AA)			
			±5%				
33pF	0603	0.30±0.03	±5%	C0603C0G1H270J(030BA)		C0603C0G1E270J(030BA)	
	1005	0.50±0.05	±5%	C1005C0G1H270J(050BA)			
	1608	0.80±0.10	±5%	C1608C0G1H270J(080AA)			
			±5%				
39pF	0603	0.30±0.03	±5%	C0603C0G1H330J(030BA)		C0603C0G1E330J(030BA)	
	1005	0.50±0.05	±5%	C1005C0G1H330J(050BA)			
	1608	0.80±0.10	±5%	C1608C0G1H330J(080AA)			
			±5%				
47pF	0603	0.30±0.03	±5%	C0603C0G1H390J(030BA)		C0603C0G1E390J(030BA)	
	1005	0.50±0.05	±5%	C1005C0G1H390J(050BA)			
	1608	0.80±0.10	±5%	C1608C0G1H390J(080AA)			
			±5%				
56pF	0603	0.30±0.03	±5%	C0603C0G1H470J(030BA)		C0603C0G1E470J(030BA)	
	1005	0.50±0.05	±5%	C1005C0G1H470J(050BA)			
	1608	0.80±0.10	±5%	C1608C0G1H470J(080AA)			
			±5%				
68pF	0603	0.30±0.03	±5%	C0603C0G1H560J(030BA)		C0603C0G1E560J(030BA)	
	1005	0.50±0.05	±5%	C1005C0G1H560J(050BA)			
	1608	0.80±0.10	±5%	C1608C0G1H560J(080AA)			
			±5%				
82pF	0603	0.30±0.03	±5%	C0603C0G1H680J(030BA)		C0603C0G1E680J(030BA)	
	1005	0.50±0.05	±5%	C1005C0G1H680J(050BA)			
	1608	0.80±0.10	±5%	C1608C0G1H680J(080AA)			
			±5%				
100pF	0603	0.30±0.03	±5%	C0603C0G1H820J(030BA)		C0603C0G1E820J(030BA)	
	1005	0.50±0.05	±5%	C1005C0G1H820J(050BA)			
	1608	0.80±0.10	±5%	C1608C0G1H820J(080AA)			
			±5%				
120pF	0603	0.30±0.03	±5%	C0603C0G1H101J(030BA)		C0603C0G1E101J(030BA)	
	1005	0.50±0.05	±5%	C1005C0G1H101J(050BA)			
	1608	0.80±0.10	±5%	C1608C0G1H101J(080AA)			
			±5%				
150pF	1005	0.50±0.05	±5%	C1005C0G1H121J(050BA)			
	1608	0.80±0.10	±5%	C1608C0G1H121J(080AA)			
			±5%				
	1005	0.50±0.05	±5%	C1005C0G1H151J(050BA)			
180pF	1005	0.50±0.05	±5%	C1005C0G1H181J(050BA)			
	1608	0.80±0.10	±5%	C1608C0G1H181J(080AA)			
			±5%				
	1005	0.50±0.05	±5%	C1005C0G1H221J(050BA)			
220pF	1608	0.80±0.10	±5%	C1608C0G1H221J(080AA)			
	1005	0.50±0.05	±5%	C1005C0G1H271J(050BA)			
			±5%				
	1608	0.80±0.10	±5%	C1608C0G1H271J(080AA)			
270pF	1005	0.50±0.05	±5%	C1005C0G1H331J(050BA)			
	1608	0.80±0.10	±5%	C1608C0G1H331J(080AA)			
			±5%				
	1005	0.50±0.05	±5%	C1005C0G1H391J(050BA)			
330pF	1608	0.80±0.10	±5%	C1608C0G1H391J(080AA)			
	1005	0.50±0.05	±5%	C1005C0G1H471J(050BA)			
			±5%				
	1608	0.80±0.10	±5%	C1608C0G1H471J(080AA)			
390pF	1005	0.50±0.05	±5%	C1005C0G1H561J(050BA)			
	1608	0.80±0.10	±5%	C1608C0G1H561J(080AA)			
			±5%				
	1005	0.50±0.05	±5%	C1005C0G1H681J(050BA)			
470pF	1608	0.80±0.10	±5%	C1608C0G1H681J(080AA)			
	1005	0.50±0.05	±5%	C1005C0G1H821J(050BA)			
			±5%				
	1608	0.80±0.10	±5%	C1608C0G1H821J(080AA)			

●要了解没有记载的电容量及产品说明, 请向本公司询问。

● RoHS 指令的对应: 表示除了依据 EU Directive 2002/95/EC 免除的用途之外, 未使用铅, 镉, 汞, 六价铬及特定溴系难燃剂 PBB, PBDE 等。

· 记载内容, 在没有予告的情况下有可能改进和变更, 请予以谅解。  
使用本商品目录时, 请务必阅读开头的注意事项。

**电容取得范围: 种类1 (温度补偿用)**
**温度特性: C0G(0±30ppm/°C)**

电容	尺寸 L×W	产品厚度 T(mm)	电容 容差	品名			
				额定电压 Edc: 50V	额定电压 Edc: 35V	额定电压 Edc: 25V	额定电压 Edc: 16V
1nF	1005	0.50±0.05	±5%	C1005C0G1H102J(050BA)			
	1608	0.80±0.10	±5%	C1608C0G1H102J(080AA)			
	2012	0.60±0.10	±5%	C2012C0G1H102J(060AA)			
1.2nF	1608	0.80±0.10	±5%	C1608C0G1H122J(080AA)			
	2012	0.60±0.10	±5%	C2012C0G1H122J(060AA)			
1.5nF	1608	0.80±0.10	±5%	C1608C0G1H152J(080AA)			
	2012	0.60±0.10	±5%	C2012C0G1H152J(060AA)			
1.8nF	1608	0.80±0.10	±5%	C1608C0G1H182J(080AA)			
	2012	0.60±0.10	±5%	C2012C0G1H182J(060AA)			
2.2nF	2012	0.80±0.10	±5%	C1608C0G1H222J(080AA)			
		0.60±0.10	±5%	C2012C0G1H222J(060AA)			
		0.85±0.10	±5%	C2012C0G1H222J(085AA)			
2.7nF	2012	1.25±0.10	±5%	C2012C0G1H222J(125AA)			
		0.80±0.10	±5%	C1608C0G1H272J(080AA)			
		0.60±0.10	±5%	C2012C0G1H272J(060AA)			
3.3nF	2012	0.80±0.10	±5%	C1608C0G1H332J(080AA)			
		0.60±0.10	±5%	C2012C0G1H332J(060AA)			
		0.85±0.10	±5%	C2012C0G1H332J(085AA)			
3.9nF	2012	1.25±0.10	±5%	C2012C0G1H332J(125AA)			
		0.80±0.10	±5%	C1608C0G1H392J(080AA)			
		0.60±0.10	±5%	C2012C0G1H392J(060AA)			
4.7nF	2012	0.85±0.10	±5%	C2012C0G1H392J(085AA)			
		1.25±0.10	±5%	C2012C0G1H392J(125AA)			
		0.80±0.10	±5%	C1608C0G1H472J(080AA)			
5.6nF	2012	0.60±0.10	±5%	C2012C0G1H472J(060AA)			
		0.85±0.10	±5%	C2012C0G1H472J(085AA)			
		1.25±0.10	±5%	C2012C0G1H472J(125AA)			
6.8nF	2012	0.80±0.10	±5%	C1608C0G1H562J(080AA)			
		0.60±0.10	±5%	C2012C0G1H562J(060AA)			
		1.25±0.10	±5%	C2012C0G1H562J(125AA)			
8.2nF	2012	0.80±0.10	±5%	C1608C0G1H682J(080AA)			
		0.60±0.10	±5%	C2012C0G1H682J(060AA)			
		1.25±0.10	±5%	C2012C0G1H682J(125AA)			
10nF	2012	0.80±0.10	±5%	C1608C0G1H822J(080AA)			
		0.60±0.10	±5%	C2012C0G1H822J(060AA)			
		1.25±0.10	±5%	C2012C0G1H822J(125AA)			
15nF	3216	0.60±0.10	±5%	C1608C0G1H103J(080AA)			
		0.60±0.10/-0.20	±5%	C3216C0G1H103J(060AA)			
		0.85±0.10	±5%	C2012C0G1H103J(060AA)			
22nF	3216	0.60±0.10	±5%	C2012C0G1H153J(085AA)			
		0.60±0.10/-0.20	±5%	C3216C0G1H153J(060AA)			
		1.25±0.10	±5%	C2012C0G1H223J(125AA)			
33nF	3216	0.60±0.10	±5%	C3216C0G1H223J(060AA)			
		1.25±0.10	±5%	C2012C0G1H333J(125AA)			
		0.85±0.10	±5%	C3216C0G1H333J(085AA)			
47nF	3216	1.15±0.10	±5%	C3216C0G1H473J(115AA)			
		2.00±0.20	±5%	C3225C0G1H473J(200AA)			
		1.60±0.15	±5%	C4532C0G1H473J(160KA)			
68nF	3216	1.60±0.10	±5%	C3216C0G1H473J(160KA)			
		2.00±0.20	±5%	C3225C0G1H473J(200AA)			
		1.60±0.15	±5%	C4532C0G1H683J(160AA)			
100nF	3216	2.00±0.20	±5%	C3225C0G1H683J(200AA)			
		1.60±0.15	±5%	C4532C0G1H683J(160KA)			
		1.60±0.20	±5%	C3216C0G1H104J(160AA)			
150nF	4532	2.50±0.30	±5%	C3225C0G1H104J(250AA)			
		2.00±0.20	±5%	C4532C0G1H104J(200KA)			
220nF	4532	2.50±0.30	±5%	C4532C0G1H154J(250KA)			
220nF	4532	3.20±0.30	±5%	C4532C0G1H224J(320KA)			

●要了解没有记载的电容量及产品说明, 请向本公司询问。

● RoHS 指令的对应: 表示除了依据 EU Directive 2002/95/EC 免除的用途之外, 未使用铅, 镉, 汞, 六价铬及特定溴系难燃剂 PBB, PBDE 等。

· 记载内容, 在没有予告的情况下有可能改进和变更, 请予以谅解。  
使用本商品目录时, 请务必阅读开头的注意事项。

**电容取得范围: 种类1 (温度补偿用)**
**温度特性: CH(0±60ppm/°C)**

电容	尺寸 L×W	产品厚度 T(mm)	电容 容差	品名			
				额定电压 Edc: 50V	额定电压 Edc: 35V	额定电压 Edc: 25V	额定电压 Edc: 16V
0.5pF	0402	0.20±0.02	±0.25pF				C0402CH1C0R5C(020BA)
	0603	0.30±0.03	±0.25pF	C0603CH1H0R5C(030BA)		C0603CH1E0R5C(030BA)	
	1005	0.50±0.05	±0.1pF	C1005CH1H0R5B(050BA)			
	1608	0.80±0.10	±0.25pF	C1005CH1H0R5C(050BA)			
0.75pF	0402	0.20±0.02	±0.25pF				C0402CH1CR75C(020BA)
	0603	0.30±0.03	±0.25pF	C0603CH1HR75C(030BA)		C0603CH1ER75C(030BA)	
	1005	0.50±0.05	±0.1pF	C1005CH1HR75B(050BA)			
	1608	0.80±0.10	±0.25pF	C1005CH1HR75C(050BA)			
1pF	0402	0.20±0.02	±0.25pF				C0402CH1C010C(020BA)
	0603	0.30±0.03	±0.25pF	C0603CH1H010C(030BA)		C0603CH1E010C(030BA)	
	1005	0.50±0.05	±0.1pF	C1005CH1H010B(050BA)			
	1608	0.80±0.10	±0.25pF	C1005CH1H010C(050BA)			
1.5pF	0402	0.20±0.02	±0.25pF				C0402CH1C1R5C(020BA)
	0603	0.30±0.03	±0.25pF	C0603CH1H1R5C(030BA)		C0603CH1E1R5C(030BA)	
	1005	0.50±0.05	±0.1pF	C1005CH1H1R5B(050BA)			
	1608	0.80±0.10	±0.25pF	C1005CH1H1R5C(050BA)			
2pF	0402	0.20±0.02	±0.25pF				C0402CH1C020C(020BA)
	0603	0.30±0.03	±0.25pF	C0603CH1H020C(030BA)		C0603CH1E020C(030BA)	
	1005	0.50±0.05	±0.1pF	C1005CH1H020B(050BA)			
	1608	0.80±0.10	±0.25pF	C1005CH1H020C(050BA)			
3pF	0402	0.20±0.02	±0.25pF				C0402CH1C030C(020BA)
	0603	0.30±0.03	±0.25pF	C0603CH1H030C(030BA)		C0603CH1E030C(030BA)	
	1005	0.50±0.05	±0.1pF	C1005CH1H030B(050BA)			
	1608	0.80±0.10	±0.25pF	C1005CH1H030C(050BA)			
4pF	0402	0.20±0.02	±0.25pF				C0402CH1C040C(020BA)
	0603	0.30±0.03	±0.25pF	C0603CH1H040C(030BA)		C0603CH1E040C(030BA)	
	1005	0.50±0.05	±0.1pF	C1005CH1H040B(050BA)			
	1608	0.80±0.10	±0.25pF	C1005CH1H040C(050BA)			
5pF	0402	0.20±0.02	±0.25pF				C0402CH1C050C(020BA)
	0603	0.30±0.03	±0.25pF	C0603CH1H050C(030BA)		C0603CH1E050C(030BA)	
	1005	0.50±0.05	±0.1pF	C1005CH1H050B(050BA)			
	1608	0.80±0.10	±0.25pF	C1005CH1H050C(050BA)			
6pF	0402	0.20±0.02	±0.5pF				C0402CH1C060D(020BA)
	0603	0.30±0.03	±0.5pF	C0603CH1H060D(030BA)		C0603CH1E060D(030BA)	
	1005	0.50±0.05	±0.25pF	C1005CH1H060C(050BA)			
	1608	0.80±0.10	±0.5pF	C1005CH1H060D(050BA)			
7pF	0402	0.20±0.02	±0.5pF				C0402CH1C070D(020BA)
	0603	0.30±0.03	±0.5pF	C0603CH1H070D(030BA)		C0603CH1E070D(030BA)	
	1005	0.50±0.05	±0.25pF	C1005CH1H070C(050BA)			
	1608	0.80±0.10	±0.5pF	C1005CH1H070D(050BA)			
8pF	0402	0.20±0.02	±0.5pF				C0402CH1C080D(020BA)
	0603	0.30±0.03	±0.5pF	C0603CH1H080D(030BA)		C0603CH1E080D(030BA)	
	1005	0.50±0.05	±0.25pF	C1005CH1H080C(050BA)			
	1608	0.80±0.10	±0.5pF	C1005CH1H080D(050BA)			
9pF	0402	0.20±0.02	±0.5pF				C0402CH1C090D(020BA)
	0603	0.30±0.03	±0.5pF	C0603CH1H090D(030BA)		C0603CH1E090D(030BA)	
	1005	0.50±0.05	±0.25pF	C1005CH1H090C(050BA)			
	1608	0.80±0.10	±0.5pF	C1005CH1H090D(050BA)			

●要了解没有记载的电容量及产品说明, 请向本公司询问。

● RoHS 指令的对应: 表示除了依据 EU Directive 2002/95/EC 免除的用途之外, 未使用铅, 镉, 汞, 六价铬及特定溴系难燃剂 PBB, PBDE 等。

· 记载内容, 在没有予告的情况下有可能改进和变更, 请予以谅解。  
使用本商品目录时, 请务必阅读开头的注意事项。



**电容取得范围: 种类1 (温度补偿用)**
**温度特性: CH(0±60ppm/°C)**

电容	尺寸 L×W	产品厚度 T(mm)	电容 容差	品名			
				额定电压 Edc: 50V	额定电压 Edc: 35V	额定电压 Edc: 25V	额定电压 Edc: 16V
10pF	0402	0.20±0.02	±0.5pF				C0402CH1C100D(020BA)
	0603	0.30±0.03	±0.5pF	C0603CH1H100D(030BA)		C0603CH1E100D(030BA)	
	1005	0.50±0.05	±0.25pF	C1005CH1H100C(050BA)			
			±0.5pF	C1005CH1H100D(050BA)			
12pF	1608	0.80±0.10	±0.25pF	C1608CH1H100C(080AA)			
			±0.5pF	C1608CH1H100D(080AA)			
	0402	0.20±0.02	±5%				C0402CH1C120J(020BA)
	0603	0.30±0.03	±5%	C0603CH1H120J(030BA)		C0603CH1E120J(030BA)	
15pF	1005	0.50±0.05	±5%	C1005CH1H120J(050BA)			
	1608	0.80±0.10	±5%	C1608CH1H120J(080AA)			
			±5%	C1608CH1H120J(080AA)			
	0402	0.20±0.02	±5%				C0402CH1C150J(020BA)
18pF	0603	0.30±0.03	±5%	C0603CH1H150J(030BA)		C0603CH1E150J(030BA)	
	1005	0.50±0.05	±5%	C1005CH1H150J(050BA)			
	1608	0.80±0.10	±5%	C1608CH1H150J(080AA)			
			±5%	C1608CH1H150J(080AA)			
22pF	0603	0.30±0.03	±5%	C0603CH1H180J(030BA)		C0603CH1E180J(030BA)	
	1005	0.50±0.05	±5%	C1005CH1H180J(050BA)			
	1608	0.80±0.10	±5%	C1608CH1H180J(080AA)			
			±5%	C1608CH1H180J(080AA)			
27pF	0603	0.30±0.03	±5%	C0603CH1H220J(030BA)		C0603CH1E220J(030BA)	
	1005	0.50±0.05	±5%	C1005CH1H220J(050BA)			
	1608	0.80±0.10	±5%	C1608CH1H220J(080AA)			
			±5%	C1608CH1H220J(080AA)			
33pF	0603	0.30±0.03	±5%	C0603CH1H270J(030BA)		C0603CH1E270J(030BA)	
	1005	0.50±0.05	±5%	C1005CH1H270J(050BA)			
	1608	0.80±0.10	±5%	C1608CH1H270J(080AA)			
			±5%	C1608CH1H270J(080AA)			
39pF	0603	0.30±0.03	±5%	C0603CH1H330J(030BA)		C0603CH1E330J(030BA)	
	1005	0.50±0.05	±5%	C1005CH1H330J(050BA)			
	1608	0.80±0.10	±5%	C1608CH1H330J(080AA)			
			±5%	C1608CH1H330J(080AA)			
47pF	0603	0.30±0.03	±5%	C0603CH1H390J(030BA)		C0603CH1E390J(030BA)	
	1005	0.50±0.05	±5%	C1005CH1H390J(050BA)			
	1608	0.80±0.10	±5%	C1608CH1H390J(080AA)			
			±5%	C1608CH1H390J(080AA)			
56pF	0603	0.30±0.03	±5%	C0603CH1H470J(030BA)		C0603CH1E470J(030BA)	
	1005	0.50±0.05	±5%	C1005CH1H470J(050BA)			
	1608	0.80±0.10	±5%	C1608CH1H470J(080AA)			
			±5%	C1608CH1H470J(080AA)			
68pF	0603	0.30±0.03	±5%	C0603CH1H560J(030BA)		C0603CH1E560J(030BA)	
	1005	0.50±0.05	±5%	C1005CH1H560J(050BA)			
	1608	0.80±0.10	±5%	C1608CH1H560J(080AA)			
			±5%	C1608CH1H560J(080AA)			
82pF	0603	0.30±0.03	±5%	C0603CH1H680J(030BA)		C0603CH1E680J(030BA)	
	1005	0.50±0.05	±5%	C1005CH1H680J(050BA)			
	1608	0.80±0.10	±5%	C1608CH1H680J(080AA)			
			±5%	C1608CH1H680J(080AA)			
100pF	0603	0.30±0.03	±5%	C0603CH1H820J(030BA)		C0603CH1E820J(030BA)	
	1005	0.50±0.05	±5%	C1005CH1H820J(050BA)			
	1608	0.80±0.10	±5%	C1608CH1H820J(080AA)			
			±5%	C1608CH1H820J(080AA)			
120pF	0603	0.30±0.03	±5%	C0603CH1H101J(030BA)		C0603CH1E101J(030BA)	
	1005	0.50±0.05	±5%	C1005CH1H101J(050BA)			
	1608	0.80±0.10	±5%	C1608CH1H101J(080AA)			
			±5%	C1608CH1H101J(080AA)			
150pF	1005	0.50±0.05	±5%	C1005CH1H121J(050BA)			
	1608	0.80±0.10	±5%	C1608CH1H121J(080AA)			
			±5%	C1608CH1H121J(080AA)			
	180pF	1005	0.50±0.05	±5%	C1005CH1H151J(050BA)		
1608		0.80±0.10	±5%	C1608CH1H151J(080AA)			
			±5%	C1608CH1H151J(080AA)			
220pF		1005	0.50±0.05	±5%	C1005CH1H181J(050BA)		
	1608	0.80±0.10	±5%	C1608CH1H181J(080AA)			
			±5%	C1608CH1H181J(080AA)			
	270pF	1005	0.50±0.05	±5%	C1005CH1H221J(050BA)		
1608		0.80±0.10	±5%	C1608CH1H221J(080AA)			
			±5%	C1608CH1H221J(080AA)			
330pF		1005	0.50±0.05	±5%	C1005CH1H271J(050BA)		
	1608	0.80±0.10	±5%	C1608CH1H271J(080AA)			
			±5%	C1608CH1H271J(080AA)			
	390pF	1005	0.50±0.05	±5%	C1005CH1H331J(050BA)		
1608		0.80±0.10	±5%	C1608CH1H331J(080AA)			
			±5%	C1608CH1H331J(080AA)			
470pF		1005	0.50±0.05	±5%	C1005CH1H391J(050BA)		
	1608	0.80±0.10	±5%	C1608CH1H391J(080AA)			
			±5%	C1608CH1H391J(080AA)			
	560pF	1005	0.50±0.05	±5%	C1005CH1H471J(050BA)		
1608		0.80±0.10	±5%	C1608CH1H471J(080AA)			
			±5%	C1608CH1H471J(080AA)			
680pF		1005	0.50±0.05	±5%	C1005CH1H561J(050BA)		
	1608	0.80±0.10	±5%	C1608CH1H561J(080AA)			
			±5%	C1608CH1H561J(080AA)			
	820pF	1005	0.50±0.05	±5%	C1005CH1H681J(050BA)		
1608		0.80±0.10	±5%	C1608CH1H681J(080AA)			
			±5%	C1608CH1H681J(080AA)			
1608		0.80±0.10	±5%	C1608CH1H821J(080AA)			
	±5%		C1608CH1H821J(080AA)				

●要了解没有记载的电容量及产品说明, 请向本公司询问。

● RoHS 指令的对应: 表示除了依据 EU Directive 2002/95/EC 免除的用途之外, 未使用铅, 镉, 汞, 六价铬及特定溴系难燃剂 PBB, PBDE 等。

· 记载内容, 在没有予告的情况下有可能改进和变更, 请予以谅解。  
使用本商品目录时, 请务必阅读开头的注意事项。

**电容取得范围: 种类1 (温度补偿用)**
**温度特性: CH(0±60ppm/°C)**

电容	尺寸 L×W	产品厚度 T(mm)	电容 容差	品名			
				额定电压 Edc: 50V	额定电压 Edc: 35V	额定电压 Edc: 25V	额定电压 Edc: 16V
1nF	1005	0.50±0.05	±5%	C1005CH1H102J(050BA)			
	1608	0.80±0.10	±5%	C1608CH1H102J(080AA)			
	2012	0.60±0.10	±5%	C2012CH1H102J(060AA)			
1.2nF	1608	0.80±0.10	±5%	C1608CH1H122J(080AA)			
	2012	0.60±0.10	±5%	C2012CH1H122J(060AA)			
1.5nF	1608	0.80±0.10	±5%	C1608CH1H152J(080AA)			
	2012	0.60±0.10	±5%	C2012CH1H152J(060AA)			
1.8nF	1608	0.80±0.10	±5%	C1608CH1H182J(080AA)			
	2012	0.60±0.10	±5%	C2012CH1H182J(060AA)			
2.2nF	1608	0.80±0.10	±5%	C1608CH1H222J(080AA)			
		0.60±0.10	±5%	C2012CH1H222J(060AA)			
		0.85±0.10	±5%	C2012CH1H222J(085AA)			
2.7nF	1608	0.80±0.10	±5%	C1608CH1H272J(080AA)			
		0.60±0.10	±5%	C2012CH1H272J(060AA)			
		0.80±0.10	±5%	C1608CH1H332J(080AA)			
3.3nF	2012	0.60±0.10	±5%	C2012CH1H332J(060AA)			
		1.25±0.10	±5%	C2012CH1H332J(125AA)			
		0.80±0.10	±5%	C1608CH1H392J(080AA)			
3.9nF	2012	0.60±0.10	±5%	C2012CH1H392J(060AA)			
		0.85±0.10	±5%	C2012CH1H392J(085AA)			
		1.25±0.10	±5%	C2012CH1H392J(125AA)			
4.7nF	1608	0.80±0.10	±5%	C1608CH1H472J(080AA)			
		0.60±0.10	±5%	C2012CH1H472J(060AA)			
		0.85±0.10	±5%	C2012CH1H472J(085AA)			
5.6nF	2012	1.25±0.10	±5%	C2012CH1H472J(125AA)			
		0.80±0.10	±5%	C1608CH1H562J(080AA)			
		0.60±0.10	±5%	C2012CH1H562J(060AA)			
6.8nF	2012	0.85±0.10	±5%	C2012CH1H562J(085AA)			
		1.25±0.10	±5%	C2012CH1H562J(125AA)			
		0.80±0.10	±5%	C1608CH1H682J(080AA)			
8.2nF	2012	0.60±0.10	±5%	C2012CH1H682J(060AA)			
		1.25±0.10	±5%	C2012CH1H682J(125AA)			
		0.80±0.10	±5%	C1608CH1H822J(080AA)			
10nF	2012	0.60±0.10	±5%	C2012CH1H822J(060AA)			
		0.80±0.10	±5%	C1608CH1H103J(080AA)			
		0.60±0.10	±5%	C2012CH1H103J(060AA)			
15nF	3216	0.60+0.10/-0.20	±5%	C3216CH1H103J(060AA)			
		0.85±0.10	±5%	C2012CH1H153J(085AA)			
		0.60+0.10/-0.20	±5%	C3216CH1H153J(060AA)			
22nF	2012	1.25±0.10	±5%	C2012CH1H223J(125AA)			
		0.60+0.10/-0.20	±5%	C3216CH1H223J(060AA)			
33nF	2012	1.25±0.20	±5%	C2012CH1H333J(125AA)			
		0.85±0.10	±5%	C3216CH1H333J(085AA)			
		1.15±0.10	±5%	C3216CH1H473J(115AA)			
47nF	3225	2.00±0.20	±5%	C3225CH1H473J(200AA)			
		1.60±0.15	±5%	C4532CH1H473J(160KA)			
		1.60±0.10	±5%	C3216CH1H683J(160AA)			
68nF	3225	2.00±0.20	±5%	C3225CH1H683J(200AA)			
		1.60±0.15	±5%	C4532CH1H683J(160KA)			
		1.60±0.20	±5%	C3216CH1H104J(160AA)			
100nF	3225	2.50±0.30	±5%	C3225CH1H104J(250AA)			
		2.00±0.20	±5%	C4532CH1H104J(200KA)			
		2.50±0.30	±5%	C4532CH1H154J(250KA)			
150nF	4532	2.50±0.30	±5%	C4532CH1H154J(250KA)			
220nF	4532	3.20±0.30	±5%	C4532CH1H224J(320KA)			

●要了解没有记载的电容量及产品说明, 请向本公司询问。

● RoHS 指令的对应: 表示除了依据 EU Directive 2002/95/EC 免除的用途之外, 未使用铅, 镉, 汞, 六价铬及特定溴系难燃剂 PBB, PBDE 等。

· 记载内容, 在没有予告的情况下有可能改进和变更, 请予以谅解。  
使用本商品目录时, 请务必阅读开头的注意事项。

**电容取得范围: 种类2 (高介电率类)**
**温度特性: X5R(±15%)**

电容	尺寸 L×W	产品厚度 T(mm)	电容 容差	品名				
				额定电压 Edc: 50V	额定电压 Edc: 35V	额定电压 Edc: 25V	额定电压 Edc: 16V	
100pF	0402	0.20±0.02	±10%				C0402X5R1C101K(020BA)	
			±20%				C0402X5R1C101M(020BA)	
	0603	0.30±0.03	±10%			C0603X5R1E101K(030BA)		
			±20%			C0603X5R1E101M(030BA)		
150pF	0402	0.20±0.02	±10%				C0402X5R1C151K(020BA)	
			±20%				C0402X5R1C151M(020BA)	
	0603	0.30±0.03	±10%			C0603X5R1E151K(030BA)		
			±20%			C0603X5R1E151M(030BA)		
220pF	0402	0.20±0.02	±10%				C0402X5R1C221K(020BA)	
			±20%				C0402X5R1C221M(020BA)	
	0603	0.30±0.03	±10%			C0603X5R1E221K(030BA)		
			±20%			C0603X5R1E221M(030BA)		
1005	0.50±0.05	±10%	C1005X5R1H221K(050BA)					
		±20%	C1005X5R1H221M(050BA)					
330pF	0402	0.20±0.02	±10%				C0402X5R1C331K(020BA)	
			±20%				C0402X5R1C331M(020BA)	
	0603	0.30±0.03	±10%			C0603X5R1E331K(030BA)		
			±20%			C0603X5R1E331M(030BA)		
1005	0.50±0.05	±10%	C1005X5R1H331K(050BA)					
		±20%	C1005X5R1H331M(050BA)					
470pF	0402	0.20±0.02	±10%				C0402X5R1C471K(020BA)	
			±20%				C0402X5R1C471M(020BA)	
	0603	0.30±0.03	±10%			C0603X5R1E471K(030BA)		
			±20%			C0603X5R1E471M(030BA)		
1005	0.50±0.05	±10%	C1005X5R1H471K(050BA)					
		±20%	C1005X5R1H471M(050BA)					
680pF	0402	0.20±0.02	±10%				C0402X5R1C681K(020BA)	
			±20%				C0402X5R1C681M(020BA)	
	0603	0.30±0.03	±10%			C0603X5R1E681K(030BA)		
			±20%			C0603X5R1E681M(030BA)		
1005	0.50±0.05	±10%	C1005X5R1H681K(050BA)					
		±20%	C1005X5R1H681M(050BA)					
1nF	0603	0.30±0.03	±10%			C0603X5R1E102K(030BA)		
			±20%			C0603X5R1E102M(030BA)		
1.5nF	0603	0.30±0.03	±10%			C0603X5R1E152K(030BA)		
			±20%			C0603X5R1E152M(030BA)		
	1005	0.50±0.05	±10%	C1005X5R1H152K(050BA)				
			±20%	C1005X5R1H152M(050BA)				
2.2nF	0603	0.30±0.03	±10%			C0603X5R1E222K(030BA)		
			±20%			C0603X5R1E222M(030BA)		
3.3nF	0603	0.30±0.03	±10%			C0603X5R1E332K(030BA)		
			±20%			C0603X5R1E332M(030BA)		
	1005	0.50±0.05	±10%	C1005X5R1H332K(050BA)				
			±20%	C1005X5R1H332M(050BA)				
4.7nF	0603	0.30±0.03	±10%				C0603X5R1C472K(030BA)	
			±20%				C0603X5R1C472M(030BA)	
	1005	0.50±0.05	±10%	C1005X5R1H472K(050BA)				
			±20%	C1005X5R1H472M(050BA)				
6.8nF	1005	0.50±0.05	±10%	C1005X5R1H682K(050BA)				
			±20%	C1005X5R1H682M(050BA)				
10nF	1005	0.50±0.05	±10%	C1005X5R1H103K(050BB)				
			±20%	C1005X5R1H103M(050BB)				
	1608	0.80±0.10	±10%	C1608X5R1H103K(080AA)				
			±20%	C1608X5R1H103M(080AA)				
15nF	1005	0.50±0.05	±10%	C1005X5R1H153K(050BB)				
			±20%	C1005X5R1H153M(050BB)				
	1608	0.80±0.10	±10%	C1608X5R1H153K(080AA)				
			±20%	C1608X5R1H153M(080AA)				

●要了解没有记载的电容量及产品说明, 请向本公司询问。

● RoHS 指令的对应: 表示除了依据 EU Directive 2002/95/EC 免除的用途之外, 未使用铅, 镉, 汞, 六价铬及特定溴系难燃剂 PBB, PBDE 等。

· 记载内容, 在没有予告的情况下有可能改进和变更, 请予以谅解。  
使用本商品目录时, 请务必阅读开头的注意事项。

**电容取得范围: 种类2 (高介电率类)**
**温度特性: X5R(±15%)**

电容	尺寸 L×W	产品厚度 T(mm)	电容 容差	品名				
				额定电压 Edc: 50V	额定电压 Edc: 35V	额定电压 Edc: 25V	额定电压 Edc: 16V	
22nF	1005	0.50±0.05	±10%	C1005X5R1H223K(050BB)				
			±20%	C1005X5R1H223M(050BB)				
	1608	0.80±0.10	±10%	C1608X5R1H223K(080AA)				
			±20%	C1608X5R1H223M(080AA)				
33nF	1005	0.50±0.05	±10%	C1005X5R1H333K(050BB)				
			±20%	C1005X5R1H333M(050BB)				
	1608	0.80±0.10	±10%	C1608X5R1H333K(080AA)				
			±20%	C1608X5R1H333M(080AA)				
47nF	1005	0.50±0.05	±10%	C1005X5R1H473K(050BB)				
			±20%	C1005X5R1H473M(050BB)				
	1608	0.80±0.10	±10%	C1608X5R1H473K(080AA)				
			±20%	C1608X5R1H473M(080AA)				
68nF	1005	0.50±0.05	±10%	C1005X5R1H683K(050BB)	C1005X5R1V683K(050BB)	C1005X5R1E683K(050BB)		
			±20%	C1005X5R1H683M(050BB)	C1005X5R1V683M(050BB)	C1005X5R1E683M(050BB)		
	1608	0.80±0.10	±10%	C1608X5R1H683K(080AA)				
			±20%	C1608X5R1H683M(080AA)				
100nF	0603	0.30±0.03	±10%				C0603X5R1C104K(030BC)	
			±20%				C0603X5R1C104M(030BC)	
	1005	0.50±0.05	±10%	C1005X5R1H104K(050BB)	C1005X5R1V104K(050BB)	C1005X5R1E104K(050BB)	C1005X5R1C104K(050BA)	
			±20%	C1005X5R1H104M(050BB)	C1005X5R1V104M(050BB)	C1005X5R1E104M(050BB)	C1005X5R1C104M(050BA)	
	1608	0.80±0.10	±10%	C1608X5R1H104K(080AA)				
			±20%	C1608X5R1H104M(080AA)				
	2012	0.85±0.10	±10%	C2012X5R1H104K(085AA)				
			±20%	C2012X5R1H104M(085AA)				
150nF	1005	0.50±0.05	±10%			C1005X5R1E154K(050BC)	C1005X5R1C154K(050BB)	
			±20%			C1005X5R1E154M(050BC)	C1005X5R1C154M(050BB)	
	1608	0.80±0.10	±10%	C1608X5R1H154K(080AB)	C1608X5R1V154K(080AB)	C1608X5R1E154K(080AA)		
			±20%	C1608X5R1H154M(080AB)	C1608X5R1V154M(080AB)	C1608X5R1E154M(080AA)		
	2012	0.85±0.10	±10%	C2012X5R1H154K(085AA)				
			±20%	C2012X5R1H154M(085AA)				
	220nF	0603	0.30±0.03	±10%				C0603X5R1C224K(030BC)
				±20%				C0603X5R1C224M(030BC)
1005		0.50±0.05	±10%			C1005X5R1E224K(050BC)	C1005X5R1C224K(050BB)	
			±20%			C1005X5R1E224M(050BC)	C1005X5R1C224M(050BB)	
1608		0.80±0.10	±10%	C1608X5R1H224K(080AB)	C1608X5R1V224K(080AB)	C1608X5R1E224K(080AA)		
			±20%	C1608X5R1H224M(080AB)	C1608X5R1V224M(080AB)	C1608X5R1E224M(080AA)		
2012		1.25±0.10	±10%	C2012X5R1H224K(125AA)				
			±20%	C2012X5R1H224M(125AA)				
330nF	1005	0.50±0.05	±10%				C1005X5R1C334K(050BC)	
			±20%				C1005X5R1C334M(050BC)	
	1608	0.80±0.10	±10%	C1608X5R1H334K(080AB)	C1608X5R1V334K(080AB)	C1608X5R1E334K(080AB)		
			±20%	C1608X5R1H334M(080AB)	C1608X5R1V334M(080AB)	C1608X5R1E334M(080AB)		
	2012	1.25±0.20	±10%	C2012X5R1H334K(125AA)				
			±20%	C2012X5R1H334M(125AA)				
	470nF	1005	0.50±0.05	±10%		C1005X5R1V474K(050BC)	C1005X5R1E474K(050BB)	
				±20%		C1005X5R1V474M(050BC)	C1005X5R1E474M(050BB)	
1608		0.80±0.10	±10%	C1608X5R1H474K(080AB)	C1608X5R1V474K(080AB)	C1608X5R1E474K(080AB)	C1608X5R1C474K(080AA)	
			±20%	C1608X5R1H474M(080AB)	C1608X5R1V474M(080AB)	C1608X5R1E474M(080AB)	C1608X5R1C474M(080AA)	
2012		1.25±0.10	±10%	C2012X5R1H474K(125AB)				
			±20%	C2012X5R1H474M(125AB)				
680nF		1005	0.50±0.05	±10%				C1005X5R1C684K(050BC)
				±20%				C1005X5R1C684M(050BC)
	1608	0.80±0.10	±10%	C1608X5R1H684K(080AB)	C1608X5R1V684K(080AB)	C1608X5R1E684K(080AB)	C1608X5R1C684K(080AA)	
			±20%	C1608X5R1H684M(080AB)	C1608X5R1V684M(080AB)	C1608X5R1E684M(080AB)	C1608X5R1C684M(080AA)	
	2012	1.25±0.10	±10%	C2012X5R1H684K(125AB)				
			±20%	C2012X5R1H684M(125AB)				

●要了解没有记载的电容量及产品说明, 请向本公司询问。

● RoHS 指令的对应: 表示除了依据 EU Directive 2002/95/EC 免除的用途之外, 未使用铅, 镉, 汞, 六价铬及特定溴系难燃剂 PBB, PBDE 等。

· 记载内容, 在没有予告的情况下有可能改进和变更, 请予以谅解。  
使用本商品目录时, 请务必阅读开头的注意事项。

**电容取得范围: 种类2 (高介电率类)**

**温度特性: X5R(±15%)**

电容	尺寸 L×W	产品厚度 T(mm)	电容 容差	品名				
				额定电压 Edc: 50V	额定电压 Edc: 35V	额定电压 Edc: 25V	额定电压 Edc: 16V	
1μF	1005	0.50±0.05	±10%				C1005X5R1C105K(050BC)	
			±20%				C1005X5R1C105M(050BC)	
	1608	0.80±0.10	±10%	C1608X5R1H105K(080AB)	C1608X5R1V105K(080AB)	C1608X5R1E105K(080AB)	C1608X5R1C105K(080AA)	
			±20%	C1608X5R1H105M(080AB)	C1608X5R1V105M(080AB)	C1608X5R1E105M(080AB)	C1608X5R1C105M(080AA)	
		0.85±0.10	±10%	C2012X5R1H105K(085AB)	C2012X5R1V105K(085AB)			
			±20%	C2012X5R1H105M(085AB)	C2012X5R1V105M(085AB)			
	2012	1.25±0.10	±10%	C2012X5R1H105K(125AB)				
			±20%	C2012X5R1H105M(125AB)				
		1.25±0.20	±10%			C2012X5R1E105K(125AA)		
			±20%			C2012X5R1E105M(125AA)		
3216	1.60±0.10	±10%	C3216X5R1H105K(160AA)					
		±20%	C3216X5R1H105M(160AA)					
1.5μF	1608	0.80±0.10	±10%			C1608X5R1E155K(080AC)	C1608X5R1C155K(080AB)	
			±20%			C1608X5R1E155M(080AC)	C1608X5R1C155M(080AB)	
		0.85±0.10	±10%			C2012X5R1E155K(085AC)		
			±20%			C2012X5R1E155M(085AC)		
	2012	1.25±0.10	±10%	C2012X5R1H155K(125AB)	C2012X5R1V155K(125AB)			
			±20%	C2012X5R1H155M(125AB)	C2012X5R1V155M(125AB)			
		1.25±0.20	±10%			C2012X5R1E155K(125AA)	C2012X5R1C155K(125AA)	
			±20%			C2012X5R1E155M(125AA)	C2012X5R1C155M(125AA)	
	3216	1.60±0.10	±10%	C3216X5R1H155K(160AB)				
			±20%	C3216X5R1H155M(160AB)				
2.2μF	1608	0.80±0.10	±10%		C1608X5R1V225K(080AC)	C1608X5R1E225K(080AC)	C1608X5R1C225K(080AB)	
			±20%		C1608X5R1V225M(080AC)	C1608X5R1E225M(080AC)	C1608X5R1C225M(080AB)	
	2012	0.85±0.10	±10%	C2012X5R1H225K(085AB)	C2012X5R1V225K(085AB)			
			±20%	C2012X5R1H225M(085AB)	C2012X5R1V225M(085AB)			
		1.25±0.20	±10%	C2012X5R1H225K(125AB)	C2012X5R1V225K(125AB)	C2012X5R1E225K(125AC)	C2012X5R1C225K(125AA)	
			±20%	C2012X5R1H225M(125AB)	C2012X5R1V225M(125AB)	C2012X5R1E225M(125AC)	C2012X5R1C225M(125AA)	
	3216	1.60±0.20	±10%	C3216X5R1H225K(160AB)				
			±20%	C3216X5R1H225M(160AB)				
	3.3μF	1608	0.80±0.10	±10%				C1608X5R1C335K(080AC)
				±20%				C1608X5R1C335M(080AC)
		0.60±0.10	±10%				C2012X5R1C335K(060AC)	
			±20%				C2012X5R1C335M(060AC)	
2012		0.85±0.10	±10%			C2012X5R1E335K(085AC)	C2012X5R1C335K(085AB)	
			±20%			C2012X5R1E335M(085AC)	C2012X5R1C335M(085AB)	
		1.25±0.10	±10%			C2012X5R1E335K(125AB)	C2012X5R1C335K(125AB)	
			±20%			C2012X5R1E335M(125AB)	C2012X5R1C335M(125AB)	
		1.25±0.20	±10%	C2012X5R1H335K(125AB)	C2012X5R1V335K(125AB)			
			±20%	C2012X5R1H335M(125AB)	C2012X5R1V335M(125AB)			
3216	1.60±0.10	±10%	C3216X5R1H335K(160AB)	C3216X5R1V335K(160AB)				
		±20%	C3216X5R1H335M(160AB)	C3216X5R1V335M(160AB)				
4.7μF	1608	0.80±0.10	±10%				C1608X5R1C475K(080AC)	
			±20%				C1608X5R1C475M(080AC)	
		0.60±0.10	±10%				C2012X5R1C475K(060AC)	
			±20%				C2012X5R1C475M(060AC)	
	2012	0.85±0.10	±10%			C2012X5R1E475K(085AC)	C2012X5R1C475K(085AB)	
			±20%			C2012X5R1E475M(085AC)	C2012X5R1C475M(085AB)	
		1.25±0.10	±10%			C2012X5R1E475K(125AB)	C2012X5R1C475K(125AB)	
			±20%			C2012X5R1E475M(125AB)	C2012X5R1C475M(125AB)	
		1.25±0.20	±10%	C2012X5R1H475K(125AB)	C2012X5R1V475K(125AB)			
			±20%	C2012X5R1H475M(125AB)	C2012X5R1V475M(125AB)			
3216	1.60±0.10	±10%	C3216X5R1H475K(085AB)	C3216X5R1V475K(085AB)				
		±20%	C3216X5R1H475M(085AB)	C3216X5R1V475M(085AB)				
	1.15±0.10	±10%			C3216X5R1E475K(115AB)			
		±20%			C3216X5R1E475M(115AB)			
	1.60±0.10	±10%			C3216X5R1E475K(160AA)			
		±20%			C3216X5R1E475M(160AA)			
	1.60±0.20	±10%	C3216X5R1H475K(160AB)	C3216X5R1V475K(160AB)				
		±20%	C3216X5R1H475M(160AB)	C3216X5R1V475M(160AB)				
3225	2.50±0.20	±10%	C3225X5R1H475K(250AB)					
		±20%	C3225X5R1H475M(250AB)					
6.8μF	2012	0.85±0.10	±10%				C2012X5R1C685K(085AC)	
			±20%				C2012X5R1C685M(085AC)	
		1.25±0.10	±10%			C2012X5R1E685K(125AC)	C2012X5R1C685K(125AB)	
			±20%			C2012X5R1E685M(125AC)	C2012X5R1C685M(125AB)	
3216	1.60±0.10	±10%	C3216X5R1H685K(160AB)	C3216X5R1V685K(160AB)				
		±20%	C3216X5R1H685M(160AB)	C3216X5R1V685M(160AB)				
4532	2.50±0.30	±10%	C4532X5R1H685K(250KA)					
		±20%	C4532X5R1H685M(250KA)					

●要了解没有记载的电容量及产品说明, 请向本公司询问。

●RoHS指令的对应: 表示除了依据EU Directive 2002/95/EC免除的用途之外, 未使用铅, 镉, 汞, 六价铬及特定溴系难燃剂PBB, PBDE等。

· 记载内容, 在没有予告的情况下有可能改进和变更, 请予以谅解。  
使用本商品目录时, 请务必阅读开头的注意事项。

**电容取得范围: 种类2 (高介电率类)**
**温度特性: X5R(±15%)**

电容	尺寸 L×W	产品厚度 T(mm)	电容 容差	品名			
				额定电压 Edc: 50V	额定电压 Edc: 35V	额定电压 Edc: 25V	额定电压 Edc: 16V
10μF	2012	0.85±0.10	±10%				C2012X5R1C106K(085AC)
			±20%				C2012X5R1C106M(085AC)
	3216	1.25±0.10	±10%			C2012X5R1E106K(125AC)	C2012X5R1C106K(125AB)
			±20%			C2012X5R1E106M(125AC)	C2012X5R1C106M(125AB)
	3216	0.85±0.10	±10%			C3216X5R1E106K(085AC)	C3216X5R1C106K(085AB)
			±20%			C3216X5R1E106M(085AC)	C3216X5R1C106M(085AB)
	3216	1.60±0.10	±10%				C3216X5R1C106K(160AA)
			±20%				C3216X5R1C106M(160AA)
	3216	1.60±0.20	±10%	C3216X5R1H106K(160AB)	C3216X5R1V106K(160AB)	C3216X5R1E106K(160AB)	
			±20%	C3216X5R1H106M(160AB)	C3216X5R1V106M(160AB)	C3216X5R1E106M(160AB)	
	3225	2.50±0.20	±10%				C3225X5R1E106K(250AA)
			±20%				C3225X5R1E106M(250AA)
4532	2.50±0.30	±10%				C4532X5R1E106K(250KA)	
		±20%				C4532X5R1E106M(250KA)	
5750	2.30±0.20	±10%	C5750X5R1H106K(230KA)				
		±20%	C5750X5R1H106M(230KA)				
15μF	2012	1.25±0.10	±20%				C2012X5R1C156M(125AC)
	3216	1.60±0.20	±20%			C3216X5R1E156M(160AC)	C3216X5R1C156M(160AB)
	3225	2.50±0.30	±20%				C3225X5R1C156M(250AA)
	4532	2.50±0.30	±20%			C4532X5R1E156M(250KA)	
22μF	2012	1.25±0.10	±20%				C2012X5R1C226M(125AC)
	3216	1.60±0.20	±20%			C3216X5R1E226M(160AC)	C3216X5R1C226M(160AB)
	3225	2.50±0.30	±20%				C3225X5R1C226M(250AA)
	4532	2.00±0.20	±20%				C4532X5R1C226M(200KA)
			±20%				C4532X5R1E226M(250KA)
	5750	2.50±0.30	±20%			C5750X5R1E226M(250KA)	
33μF	3216	1.60±0.20	±20%				C3216X5R1C336M(160AB)
	4532	2.50±0.30	±20%				C4532X5R1C336M(250KA)
	5750	2.00±0.20	±20%				C5750X5R1C336M(200KA)
47μF	3216	1.60±0.20	±20%				C3216X5R1C476M(160AB)
	5750	2.30±0.20	±20%				C5750X5R1C476M(230KA)

●要了解没有记载的电容量及产品说明, 请向本公司询问。

● RoHS 指令的对应: 表示除了依据 EU Directive 2002/95/EC 免除的用途之外, 未使用铅, 镉, 汞, 六价铬及特定溴系难燃剂 PBB, PBDE 等。

· 记载内容, 在没有予告的情况下有可能改进和变更, 请予以谅解。  
使用本商品目录时, 请务必阅读开头的注意事项。

**电容取得范围: 种类2 (高介电率类)**
**温度特性: X5R(±15%)**

电容	尺寸 L×W	产品厚度 T(mm)	电容 容差	品名		
				额定电压 Edc: 10V	额定电压 Edc: 6.3V	额定电压 Edc: 4V
1nF	0402	0.20±0.02	±10%	C0402X5R1A102K(020BA)		
			±20%	C0402X5R1A102M(020BA)		
1.5nF	0402	0.20±0.02	±10%	C0402X5R1A152K(020BA)		
			±20%	C0402X5R1A152M(020BA)		
2.2nF	0402	0.20±0.02	±10%	C0402X5R1A222K(020BA)		
			±20%	C0402X5R1A222M(020BA)		
3.3nF	0402	0.20±0.02	±10%	C0402X5R0J332K(020BA)		
			±20%	C0402X5R0J332M(020BA)		
4.7nF	0402	0.20±0.02	±10%	C0402X5R0J472K(020BB)		
			±20%	C0402X5R0J472M(020BB)		
6.8nF	0402	0.20±0.02	±10%	C0402X5R0J682K(020BB)		
			±20%	C0402X5R0J682M(020BB)		
	0603	0.30±0.03	±10%	C0603X5R1A682K(030BA)		
			±20%	C0603X5R1A682M(030BA)		
10nF	0402	0.20±0.02	±10%	C0402X5R0J103K(020BB)		
			±20%	C0402X5R0J103M(020BB)		
15nF	0603	0.30±0.03	±10%	C0603X5R1A103K(030BA)		
			±20%	C0603X5R1A103M(030BA)		
22nF	0603	0.30±0.03	±10%	C0603X5R0J153K(030BA)		
			±20%	C0603X5R0J153M(030BA)		
33nF	0603	0.30±0.03	±10%	C0603X5R0J223K(030BC)		
			±20%	C0603X5R0J223M(030BC)		
47nF	0603	0.30±0.03	±10%	C0603X5R0J333K(030BC)		
			±20%	C0603X5R0J333M(030BC)		
68nF	0603	0.30±0.03	±10%	C0603X5R0J473K(030BC)		
			±20%	C0603X5R0J473M(030BC)		
100nF	0603	0.30±0.03	±10%	C0603X5R0J683K(030BC)		
			±20%	C0603X5R0J683M(030BC)		
150nF	0603	0.30±0.03	±10%	C0603X5R0J104K(030BC)		
			±20%	C0603X5R0J104M(030BC)		
220nF	0603	0.30±0.03	±10%	C0603X5R0J154K(030BA)		
			±20%	C0603X5R0J154M(030BA)		
330nF	1005	0.50±0.05	±10%	C1005X5R1A334K(050BC)		
			±20%	C1005X5R1A334M(050BC)		
470nF	1005	0.50±0.05	±10%	C1005X5R1A474K(050BC)		
			±20%	C1005X5R1A474M(050BC)		
680nF	1005	0.50±0.05	±10%	C1005X5R1A684K(050BB)		
			±20%	C1005X5R1A684M(050BB)		
1μF	1005	0.50±0.05	±10%	C1005X5R1A105K(050BB)	C1005X5R0J105K(050BC)	
			±20%	C1005X5R1A105M(050BB)	C1005X5R0J105M(050BC)	
1.5μF	1005	0.50±0.05	±10%	C1005X5R1A155K(050BC)	C1005X5R0J155K(050BB)	
			±20%	C1005X5R1A155M(050BC)	C1005X5R0J155M(050BB)	
2.2μF	1005	0.50±0.05	±10%	C1005X5R1A225K(050BC)	C1005X5R0J225K(050BC)	C1005X5R0G225K(050BB)
			±20%	C1005X5R1A225M(050BC)	C1005X5R0J225M(050BB)	C1005X5R0G225M(050BB)
	1608	0.80±0.10	±10%	C1608X5R1A225K(080AC)	C1608X5R0J225K(080AB)	
			±20%	C1608X5R1A225M(080AC)	C1608X5R0J225M(080AB)	
3.3μF	1005	0.50±0.10	±10%	C1005X5R0J335M(050BC)		
			±20%	C1608X5R0J335K(080AB)		
4.7μF	1608	0.80±0.10	±10%	C1608X5R1A335K(080AB)		
			±20%	C1608X5R1A335M(080AB)		
	1005	0.50±0.15/-0.10	±10%	C1005X5R0J475M(050BC)	C1005X5R0G475M(050BB)	
			±20%	C1608X5R1A475K(080AB)	C1608X5R0J475K(080AB)	
2012	0.60±0.10	±10%	C1608X5R0J475M(080AB)			
		±20%	C2012X5R1A475K(060AB)			
6.8μF	2012	1.25±0.10	±10%	C2012X5R1A475M(060AB)		
			±20%	C2012X5R1A475K(125AA)		
	1608	0.80±0.10	±10%	C2012X5R1A475M(125AA)	C1608X5R0J685K(080AB)	
			±20%	C1608X5R1A685K(080AC)	C1608X5R0J685M(080AB)	
2012	1.25±0.10	±10%	C1608X5R1A685M(080AC)	C1608X5R0J685M(080AB)		
		±20%	C2012X5R1A685K(060AC)	C2012X5R1A685M(060AC)		
1.25±0.10	2012	1.25±0.10	±10%	C2012X5R1A685K(125AC)		
			±20%	C2012X5R1A685M(125AC)		

●要了解没有记载的电容量及产品说明, 请向本公司询问。

●RoHS指令的对应: 表示除了依据EU Directive 2002/95/EC免除的用途之外, 未使用铅, 镉, 汞, 六价铬及特定溴系难燃剂PBB, PBDE等。

·记载内容, 在没有予告的情况下有可能改进和变更, 请予以谅解。  
使用本商品目录时, 请务必阅读开头的注意事项。

**电容取得范围: 种类2 (高介电率类)**
**温度特性: X5R(±15%)**

电容	尺寸 L×W	产品厚度 T(mm)	电容 容差	品名		
				额定电压 Edc: 10V	额定电压 Edc: 6.3V	额定电压 Edc: 4V
10μF	1608	0.80±0.10	±10%	C1608X5R1A106K(080AC)	C1608X5R0J106K(080AB)	
			±20%	C1608X5R1A106M(080AC)	C1608X5R0J106M(080AB)	
			±10%	C2012X5R1A106K(085AB)		
	2012	0.85±0.10	±20%	C2012X5R1A106M(085AB)		
			±10%	C2012X5R1A106K(125AC)		
			±20%	C2012X5R1A106M(125AC)		
15μF	2012	0.85±0.10	±20%	C2012X5R1A156M(085AC)		
			±20%	C2012X5R1A156M(125AB)		
			±20%	C2012X5R1A226M(085AC)	C2012X5R0J226M(085AB)	
22μF	2012	1.25±0.10	±10%	C2012X5R0J226K(125AB)		
			±20%	C2012X5R1A226M(125AB)	C2012X5R0J226M(125AB)	
			±20%	C3216X5R1A226M(160AC)		
33μF	2012	1.25±0.20	±20%		C2012X5R0J336M(125AC)	
			±20%	C3216X5R1A336M(160AB)		
			±20%		C2012X5R0J476M(125AC)	
47μF	3216	1.60±0.20	±20%	C3216X5R1A476M(160AB)	C3216X5R0J476M(160AC)	
			±20%	C3225X5R1A476M(250AC)	C3225X5R0J476M(250AA)	
			±20%	C3216X5R1A686M(160AC)	C3216X5R0J686M(160AB)	
68μF	3225	2.00±0.20	±20%		C3225X5R0J686M(200AC)	
			±20%	C5750X5R1A686M(230KA)		
			±20%	C3216X5R1A107M(160AC)	C3216X5R0J107M(160AB)	
100μF	3225	2.50±0.30	±20%		C3225X5R0J107M(250AC)	
			±20%	C4532X5R1A107M(280KC)	C4532X5R0J107M(280KA)	
			±20%	C5750X5R1A107M(280KC)	C5750X5R0J107M(280KA)	
			±20%			

●要了解没有记载的电容量及产品说明, 请向本公司询问。

● RoHS 指令的对应: 表示除了依据 EU Directive 2002/95/EC 免除的用途之外, 未使用铅, 镉, 汞, 六价铬及特定溴系难燃剂 PBB, PBDE 等。

· 记载内容, 在没有予告的情况下有可能改进和变更, 请予以谅解。  
使用本商品目录时, 请务必阅读开头的注意事项。



**电容取得范围: 种类2 (高介电率类)**
**温度特性: X6S(±22%)**

电容	尺寸 L×W	产品厚度 T(mm)	电容 容差	品名			
				额定电压 Edc: 50V	额定电压 Edc: 35V	额定电压 Edc: 25V	额定电压 Edc: 16V
10nF	1005	0.50±0.05	±10%	C1005X6S1H103K(050BB)			
			±20%	C1005X6S1H103M(050BB)			
15nF	1005	0.50±0.05	±10%	C1005X6S1H153K(050BB)			
			±20%	C1005X6S1H153M(050BB)			
22nF	1005	0.50±0.05	±10%	C1005X6S1H223K(050BB)			
			±20%	C1005X6S1H223M(050BB)			
33nF	1005	0.50±0.05	±10%	C1005X6S1H333K(050BB)			
			±20%	C1005X6S1H333M(050BB)			
47nF	1005	0.50±0.05	±10%	C1005X6S1H473K(050BB)			
			±20%	C1005X6S1H473M(050BB)			
68nF	1005	0.50±0.05	±10%	C1005X6S1H683K(050BB)	C1005X6S1V683K(050BB)	C1005X6S1E683K(050BB)	
			±20%	C1005X6S1H683M(050BB)	C1005X6S1V683M(050BB)	C1005X6S1E683M(050BB)	
100nF	1005	0.50±0.05	±10%	C1005X6S1H104K(050BB)	C1005X6S1V104K(050BB)	C1005X6S1E104K(050BB)	
			±20%	C1005X6S1H104M(050BB)	C1005X6S1V104M(050BB)	C1005X6S1E104M(050BB)	
150nF	1005	0.50±0.05	±10%			C1005X6S1E154K(050BC)	C1005X6S1C154K(050BB)
			±20%			C1005X6S1E154M(050BC)	C1005X6S1C154M(050BB)
150nF	1608	0.80±0.10	±10%	C1608X6S1H154K(080AB)	C1608X6S1V154K(080AB)		
			±20%	C1608X6S1H154M(080AB)	C1608X6S1V154M(080AB)		
220nF	1005	0.50±0.05	±10%			C1005X6S1E224K(050BC)	C1005X6S1C224K(050BB)
			±20%			C1005X6S1E224M(050BC)	C1005X6S1C224M(050BB)
220nF	1608	0.80±0.10	±10%	C1608X6S1H224K(080AB)	C1608X6S1V224K(080AB)		
			±20%	C1608X6S1H224M(080AB)	C1608X6S1V224M(080AB)		
330nF	1608	0.80±0.10	±10%	C1608X6S1H334K(080AB)	C1608X6S1V334K(080AB)	C1608X6S1E334K(080AB)	
			±20%	C1608X6S1H334M(080AB)	C1608X6S1V334M(080AB)	C1608X6S1E334M(080AB)	
470nF	1005	0.50±0.05	±10%			C1005X6S1C474K(050BC)	
			±20%			C1005X6S1C474M(050BC)	
470nF	1608	0.80±0.10	±10%	C1608X6S1H474K(080AB)	C1608X6S1V474K(080AB)	C1608X6S1E474K(080AB)	
			±20%	C1608X6S1H474M(080AB)	C1608X6S1V474M(080AB)	C1608X6S1E474M(080AB)	
470nF	2012	1.25±0.10	±10%	C2012X6S1H474K(125AB)			
			±20%	C2012X6S1H474M(125AB)			
680nF	1608	0.80±0.10	±10%	C1608X6S1H684K(080AC)	C1608X6S1V684K(080AB)	C1608X6S1E684K(080AB)	C1608X6S1C684K(080AB)
			±20%	C1608X6S1H684M(080AC)	C1608X6S1V684M(080AB)	C1608X6S1E684M(080AB)	C1608X6S1C684M(080AB)
680nF	2012	1.25±0.10	±10%	C2012X6S1H684K(125AB)			
			±20%	C2012X6S1H684M(125AB)			
1μF	1608	0.80±0.10	±10%	C1608X6S1H105K(080AC)	C1608X6S1V105K(080AB)	C1608X6S1E105K(080AB)	C1608X6S1C105K(080AC)
			±20%	C1608X6S1H105M(080AC)	C1608X6S1V105M(080AB)	C1608X6S1E105M(080AB)	C1608X6S1C105M(080AC)
1μF	2012	0.85±0.10	±10%	C2012X6S1H105K(085AB)	C2012X6S1V105K(085AB)	C2012X6S1E105K(085AB)	
			±20%	C2012X6S1H105M(085AB)	C2012X6S1V105M(085AB)	C2012X6S1E105M(085AB)	
1μF	2012	1.25±0.10	±10%	C2012X6S1H105K(125AB)			
			±20%	C2012X6S1H105M(125AB)			
1.5μF	1608	0.80±0.10	±10%			C1608X6S1C155K(080AC)	
			±20%			C1608X6S1C155M(080AC)	
1.5μF	2012	1.25±0.10	±10%	C2012X6S1H155K(125AB)	C2012X6S1V155K(125AB)		
			±20%	C2012X6S1H155M(125AB)	C2012X6S1V155M(125AB)		
1.5μF	3216	1.60±0.10	±10%	C3216X6S1H155K(160AB)			
			±20%	C3216X6S1H155M(160AB)			
2.2μF	1608	0.80±0.10	±10%			C1608X6S1C225K(080AC)	
			±20%			C1608X6S1C225M(080AC)	
2.2μF	2012	0.85±0.10	±10%	C2012X6S1H225K(085AC)	C2012X6S1V225K(085AB)	C2012X6S1E225K(085AB)	C2012X6S1C225K(085AB)
			±20%	C2012X6S1H225M(085AC)	C2012X6S1V225M(085AB)	C2012X6S1E225M(085AB)	C2012X6S1C225M(085AB)
2.2μF	2012	1.25±0.20	±10%	C2012X6S1H225K(125AB)	C2012X6S1V225K(125AB)	C2012X6S1E225K(125AB)	
			±20%	C2012X6S1H225M(125AB)	C2012X6S1V225M(125AB)	C2012X6S1E225M(125AB)	
2.2μF	3216	1.60±0.20	±10%	C3216X6S1H225K(160AB)			
			±20%	C3216X6S1H225M(160AB)			
3.3μF	2012	1.25±0.10	±10%			C2012X6S1C335K(125AB)	
			±20%			C2012X6S1C335M(125AB)	
3.3μF	2012	1.25±0.20	±10%	C2012X6S1H335K(125AC)	C2012X6S1V335K(125AB)	C2012X6S1E335K(125AB)	
			±20%	C2012X6S1H335M(125AC)	C2012X6S1V335M(125AB)	C2012X6S1E335M(125AB)	
3.3μF	3216	1.60±0.10	±10%	C3216X6S1H335K(160AB)	C3216X6S1V335K(160AB)		
			±20%	C3216X6S1H335M(160AB)	C3216X6S1V335M(160AB)		

●要了解没有记载的电容量及产品说明, 请向本公司询问。

● RoHS 指令的对应: 表示除了依据 EU Directive 2002/95/EC 免除的用途之外, 未使用铅, 镉, 汞, 六价铬及特定溴系难燃剂 PBB, PBDE 等。

· 记载内容, 在没有予告的情况下有可能改进和变更, 请予以谅解。  
使用本商品目录时, 请务必阅读开头的注意事项。

**电容取得范围: 种类2 (高介电率类)**
**温度特性: X6S(±22%)**

电容	尺寸 L×W	产品厚度 T(mm)	电容 容差	品名			
				额定电压 Edc: 50V	额定电压 Edc: 35V	额定电压 Edc: 25V	额定电压 Edc: 16V
4.7μF	2012	0.85±0.10	±10%				C2012X6S1C475K(085AC)
			±20%				C2012X6S1C475M(085AC)
		1.25±0.10	±10%				C2012X6S1C475K(125AB)
			±20%				C2012X6S1C475M(125AB)
	1.25±0.20	±10%	C2012X6S1H475K(125AC)	C2012X6S1V475K(125AB)	C2012X6S1E475K(125AB)		
		±20%	C2012X6S1H475M(125AC)	C2012X6S1V475M(125AB)	C2012X6S1E475M(125AB)		
	3216	0.85±0.10	±10%		C3216X6S1V475K(085AC)	C3216X6S1E475K(085AB)	
			±20%		C3216X6S1V475M(085AC)	C3216X6S1E475M(085AB)	
	1.60±0.20	±10%	C3216X6S1H475K(160AB)	C3216X6S1V475K(160AB)	C3216X6S1E475K(160AB)		
		±20%	C3216X6S1H475M(160AB)	C3216X6S1V475M(160AB)	C3216X6S1E475M(160AB)		
3225	2.50±0.20	±10%	C3225X6S1H475K(250AB)				
		±20%	C3225X6S1H475M(250AB)				
6.8μF	2012	1.25±0.10	±10%				C2012X6S1C685K(125AC)
			±20%				C2012X6S1C685M(125AC)
	3216	1.60±0.10	±10%		C3216X6S1V685K(160AC)	C3216X6S1E685K(160AB)	C3216X6S1C685K(160AB)
			±20%		C3216X6S1V685M(160AC)	C3216X6S1E685M(160AB)	C3216X6S1C685M(160AB)
10μF	2012	1.25±0.10	±10%				C2012X6S1C106K(125AC)
			±20%				C2012X6S1C106M(125AC)
	3216	0.85±0.10	±10%				C3216X6S1C106K(085AC)
			±20%				C3216X6S1C106M(085AC)
		1.60±0.10	±10%				C3216X6S1C106K(160AC)
			±20%				C3216X6S1C106M(160AC)
1.60±0.20	±10%		C3216X6S1V106K(160AC)	C3216X6S1E106K(160AB)			
	±20%		C3216X6S1V106M(160AC)	C3216X6S1E106M(160AB)			
15μF	3216	1.60±0.20	±20%				C3216X6S1C156M(160AC)
22μF	3216	1.60±0.20	±20%				C3216X6S1C226M(160AC)
			3225	2.50±0.30	±20%		

●要了解没有记载的电容量及产品说明, 请向本公司询问。

● RoHS 指令的对应: 表示除了依据 EU Directive 2002/95/EC 免除的用途之外, 未使用铅, 镉, 汞, 六价铬及特定溴系难燃剂 PBB, PBDE 等。

· 记载内容, 在没有予告的情况下有可能改进和变更, 请予以谅解。  
使用本商品目录时, 请务必阅读开头的注意事项。

电容取得范围: 种类2 (高介电率类)

温度特性: X6S(±22%)

电容	尺寸 L×W	产品厚度 T(mm)	电容 容差	品名		
				额定电压 Edc: 10V	额定电压 Edc: 6.3V	额定电压 Edc: 4V
100nF	0603	0.30±0.03	±10%	C0603X6S0J104K(030BC)	C0603X6S0G104K(030BB)	
			±20%	C0603X6S0J104M(030BC)	C0603X6S0G104M(030BB)	
220nF	0603	0.30±0.03	±10%	C0603X6S0J224K(030BC)	C0603X6S0G224K(030BB)	
			±20%	C0603X6S0J224M(030BC)	C0603X6S0G224M(030BB)	
330nF	1005	0.50±0.05	±10%	C1005X6S1A334K(050BB)	C1005X6S0J334K(050BB)	
			±20%	C1005X6S1A334M(050BB)	C1005X6S0J334M(050BB)	
470nF	1005	0.50±0.05	±10%	C1005X6S1A474K(050BB)	C1005X6S0J474K(050BC)	
			±20%	C1005X6S1A474M(050BB)	C1005X6S0J474M(050BC)	
680nF	1005	0.50±0.05	±10%	C1005X6S1A684K(050BC)	C1005X6S0J684K(050BB)	
			±20%	C1005X6S1A684M(050BC)	C1005X6S0J684M(050BB)	
1μF	1005	0.50±0.05	±10%	C1005X6S1A105K(050BC)	C1005X6S0J105K(050BB)	C1005X6S0G105K(050BC)
			±20%	C1005X6S1A105M(050BC)	C1005X6S0J105M(050BB)	C1005X6S0G105M(050BC)
1.5μF	1005	0.50±0.05	±10%			C1005X6S0G155K(050BC)
			±20%			C1005X6S0G155M(050BC)
2.2μF	1005	0.50±0.05	±20%			C1005X6S0G225M(050BC)
3.3μF	1608	0.80±0.10	±10%	C1608X6S1A225K(080AB)	C1608X6S0J225K(080AB)	
			±20%	C1608X6S1A225M(080AB)	C1608X6S0J225M(080AB)	
4.7μF	1608	0.80±0.10	±10%	C1608X6S1A335K(080AC)	C1608X6S0J335K(080AB)	
			±20%	C1608X6S1A335M(080AC)	C1608X6S0J335M(080AB)	
4.7μF	1608	0.80±0.10	±10%	C1608X6S1A475K(080AC)	C1608X6S0J475K(080AB)	
			±20%	C1608X6S1A475M(080AC)	C1608X6S0J475M(080AB)	
4.7μF	2012	0.85±0.10	±10%	C2012X6S1A475K(085AB)		
			±20%	C2012X6S1A475M(085AB)		
6.8μF	1608	0.80±0.10	±10%			C1608X6S0G685K(080AC)
			±20%			C1608X6S0G685M(080AC)
6.8μF	2012	0.85±0.10	±10%	C2012X6S1A685K(085AC)	C2012X6S0J685K(085AB)	
			±20%	C2012X6S1A685M(085AC)	C2012X6S0J685M(085AB)	
6.8μF	2012	1.25±0.10	±10%	C2012X6S1A685K(125AB)		
			±20%	C2012X6S1A685M(125AB)		
6.8μF	3216	0.85±0.10	±10%	C3216X6S1A685K(085AB)		
			±20%	C3216X6S1A685M(085AB)		
10μF	1608	0.80+0.20/-0.10	±20%			C1608X6S0G106M(080AC)
			±10%			C1608X6S0G106K(080AC)
10μF	2012	0.85±0.10	±10%	C2012X6S1A106K(085AC)	C2012X6S0J106K(085AB)	
			±20%	C2012X6S1A106M(085AC)	C2012X6S0J106M(085AB)	
10μF	2012	1.25±0.10	±10%	C2012X6S1A106K(125AB)	C2012X6S0J106K(125AB)	
			±20%	C2012X6S1A106M(125AB)	C2012X6S0J106M(125AB)	
10μF	3216	0.85±0.10	±10%	C3216X6S1A106K(085AB)		
			±20%	C3216X6S1A106M(085AB)		
15μF	2012	1.25±0.10	±20%	C2012X6S1A156M(125AC)	C2012X6S0J156M(125AB)	
22μF	3216	1.60±0.20	±20%	C3216X6S1A156M(160AB)		
22μF	2012	1.25±0.10	±20%	C2012X6S1A226M(125AC)	C2012X6S0J226M(125AB)	
33μF	3216	1.60±0.20	±20%	C3216X6S1A226M(160AB)	C3216X6S0J226M(160AC)	
33μF	3216	1.60±0.20	±20%	C3216X6S1A336M(160AC)	C3216X6S0J336M(160AB)	
47μF	3216	1.60±0.20	±20%	C3216X6S1A476M(160AC)	C3216X6S0J476M(160AB)	C3216X6S0G476M(160AC)
68μF	3216	1.60±0.20	±20%			C3216X6S0G686M(160AB)
100μF	3216	1.60+0.30/-0.10	±20%			C3216X6S0G107M(160AB)
100μF	3225	2.50±0.30	±20%		C3225X6S0J107M(250AC)	C3225X6S0G107M(250AC)
100μF	4532	2.80±0.30	±20%		C4532X6S0J107M(280KC)	

●要了解没有记载的电容量及产品说明, 请向本公司询问。

● RoHS 指令的对应: 表示除了依据 EU Directive 2002/95/EC 免除的用途之外, 未使用铅, 镉, 汞, 六价铬及特定溴系难燃剂 PBB, PBDE 等。

· 记载内容, 在没有予告的情况下有可能改进和变更, 请予以谅解。  
使用本商品目录时, 请务必阅读开头的注意事项。

**电容取得范围: 种类2 (高介电率类)**
**温度特性: X7R(±15%)**

电容	尺寸 L×W	产品厚度 T(mm)	电容 容差	品名			
				额定电压 Edc: 50V	额定电压 Edc: 35V	额定电压 Edc: 25V	额定电压 Edc: 16V
100pF	0603	0.30±0.03	±10%			C0603X7R1E101K(030BA)	
			±20%			C0603X7R1E101M(030BA)	
150pF	0603	0.30±0.03	±10%			C0603X7R1E151K(030BA)	
			±20%			C0603X7R1E151M(030BA)	
220pF	0603	0.30±0.03	±10%			C0603X7R1E221K(030BA)	
			±20%			C0603X7R1E221M(030BA)	
	1005	0.50±0.05	±10%	C1005X7R1H221K(050BA)			
			±20%	C1005X7R1H221M(050BA)			
330pF	0603	0.30±0.03	±10%			C0603X7R1E331K(030BA)	
			±20%			C0603X7R1E331M(030BA)	
	1005	0.50±0.05	±10%	C1005X7R1H331K(050BA)			
			±20%	C1005X7R1H331M(050BA)			
470pF	0603	0.30±0.03	±10%			C0603X7R1E471K(030BA)	
			±20%			C0603X7R1E471M(030BA)	
	1005	0.50±0.05	±10%	C1005X7R1H471K(050BA)			
			±20%	C1005X7R1H471M(050BA)			
680pF	0603	0.30±0.03	±10%			C0603X7R1E681K(030BA)	
			±20%			C0603X7R1E681M(030BA)	
	1005	0.50±0.05	±10%	C1005X7R1H681K(050BA)			
			±20%	C1005X7R1H681M(050BA)			
1nF	0603	0.30±0.03	±10%			C0603X7R1E102K(030BA)	
			±20%			C0603X7R1E102M(030BA)	
	1005	0.50±0.05	±10%	C1005X7R1H102K(050BA)			
			±20%	C1005X7R1H102M(050BA)			
1.5nF	0603	0.30±0.03	±10%			C0603X7R1E152K(030BA)	
			±20%			C0603X7R1E152M(030BA)	
	1005	0.50±0.05	±10%	C1005X7R1H152K(050BA)			
			±20%	C1005X7R1H152M(050BA)			
2.2nF	0603	0.30±0.03	±10%			C0603X7R1E222K(030BA)	
			±20%			C0603X7R1E222M(030BA)	
	1005	0.50±0.05	±10%	C1005X7R1H222K(050BA)			
			±20%	C1005X7R1H222M(050BA)			
3.3nF	0603	0.30±0.03	±10%			C0603X7R1E332K(030BA)	
			±20%			C0603X7R1E332M(030BA)	
	1005	0.50±0.05	±10%	C1005X7R1H332K(050BA)			
			±20%	C1005X7R1H332M(050BA)			
4.7nF	0603	0.30±0.03	±10%				C0603X7R1C472K(030BA)
			±20%				C0603X7R1C472M(030BA)
	1005	0.50±0.05	±10%	C1005X7R1H472K(050BA)			
			±20%	C1005X7R1H472M(050BA)			
6.8nF	1005	0.50±0.05	±10%	C1005X7R1H682K(050BA)			
			±20%	C1005X7R1H682M(050BA)			
10nF	1005	0.50±0.05	±10%	C1005X7R1H103K(050BB)	C1005X7R1V103K(050BB)		
			±20%	C1005X7R1H103M(050BB)	C1005X7R1V103M(050BB)		
	1608	0.80±0.10	±10%	C1608X7R1H103K(080AA)			
			±20%	C1608X7R1H103M(080AA)			
15nF	1005	0.50±0.05	±10%	C1005X7R1H153K(050BB)	C1005X7R1V153K(050BB)		
			±20%	C1005X7R1H153M(050BB)	C1005X7R1V153M(050BB)		
	1608	0.80±0.10	±10%	C1608X7R1H153K(080AA)			
			±20%	C1608X7R1H153M(080AA)			
22nF	1005	0.50±0.05	±10%	C1005X7R1H223K(050BB)	C1005X7R1V223K(050BB)		
			±20%	C1005X7R1H223M(050BB)	C1005X7R1V223M(050BB)		
	1608	0.80±0.10	±10%	C1608X7R1H223K(080AA)			
			±20%	C1608X7R1H223M(080AA)			
33nF	1005	0.50±0.05	±10%	C1005X7R1H333K(050BB)	C1005X7R1V333K(050BB)		
			±20%	C1005X7R1H333M(050BB)	C1005X7R1V333M(050BB)		
	1608	0.80±0.10	±10%	C1608X7R1H333K(080AA)			
			±20%	C1608X7R1H333M(080AA)			
47nF	1005	0.50±0.05	±10%	C1005X7R1H473K(050BB)	C1005X7R1V473K(050BB)		
			±20%	C1005X7R1H473M(050BB)	C1005X7R1V473M(050BB)		
	1608	0.80±0.10	±10%	C1608X7R1H473K(080AA)			
			±20%	C1608X7R1H473M(080AA)			
68nF	1005	0.50±0.05	±10%	C1005X7R1H683K(050BB)	C1005X7R1V683K(050BB)	C1005X7R1E683K(050BB)	
			±20%	C1005X7R1H683M(050BB)	C1005X7R1V683M(050BB)	C1005X7R1E683M(050BB)	
	1608	0.80±0.10	±10%	C1608X7R1H683K(080AA)			
			±20%	C1608X7R1H683M(080AA)			

●要了解没有记载的电容量及产品说明, 请向本公司询问。

● RoHS 指令的对应: 表示除了依据 EU Directive 2002/95/EC 免除的用途之外, 未使用铅, 镉, 汞, 六价铬及特定溴系难燃剂 PBB, PBDE 等。

· 记载内容, 在没有予告的情况下有可能改进和变更, 请予以谅解。  
使用本商品目录时, 请务必阅读开头的注意事项。

电容取得范围: 种类2 (高介电率类)

温度特性: X7R(±15%)

电容	尺寸 L×W	产品厚度 T(mm)	电容 容差	品名					
				额定电压 Edc: 50V	额定电压 Edc: 35V	额定电压 Edc: 25V	额定电压 Edc: 16V		
100nF	1005	0.50±0.05	±10%	C1005X7R1H104K(050BB)	C1005X7R1V104K(050BB)	C1005X7R1E104K(050BB)	C1005X7R1C104K(050BC)		
			±20%	C1005X7R1H104M(050BB)	C1005X7R1V104M(050BB)	C1005X7R1E104M(050BB)	C1005X7R1C104M(050BC)		
	1608	0.80±0.10	±10%	C1608X7R1H104K(080AA)					
			±20%	C1608X7R1H104M(080AA)					
	2012	0.85±0.10	±10%	C2012X7R1H104K(085AA)					
			±20%	C2012X7R1H104M(085AA)					
150nF	1005	0.50±0.05	±10%					C1005X7R1C154K(050BC)	
			±20%					C1005X7R1C154M(050BC)	
	1608	0.80±0.10	±10%	C1608X7R1H154K(080AB)	C1608X7R1V154K(080AB)	C1608X7R1E154K(080AA)			
			±20%	C1608X7R1H154M(080AB)	C1608X7R1V154M(080AB)	C1608X7R1E154M(080AA)			
	2012	0.85±0.10	±10%	C2012X7R1H154K(085AA)					
			±20%	C2012X7R1H154M(085AA)					
220nF	1005	0.50±0.05	±10%					C1005X7R1C224K(050BC)	
			±20%					C1005X7R1C224M(050BC)	
	1608	0.80±0.10	±10%	C1608X7R1H224K(080AB)	C1608X7R1V224K(080AB)	C1608X7R1E224K(080AC)			
			±20%	C1608X7R1H224M(080AB)	C1608X7R1V224M(080AB)	C1608X7R1E224M(080AC)			
	2012	1.25±0.10	±10%	C2012X7R1H224K(125AA)					
			±20%	C2012X7R1H224M(125AA)					
330nF	1608	0.80±0.10	±10%	C1608X7R1H334K(080AC)	C1608X7R1V334K(080AB)	C1608X7R1E334K(080AB)			
			±20%	C1608X7R1H334M(080AC)	C1608X7R1V334M(080AB)	C1608X7R1E334M(080AB)			
	2012	1.25±0.20	±10%	C2012X7R1H334K(125AA)					
			±20%	C2012X7R1H334M(125AA)					
	470nF	1608	0.80±0.10	±10%	C1608X7R1H474K(080AC)	C1608X7R1V474K(080AB)	C1608X7R1E474K(080AB)	C1608X7R1C474K(080AC)	
				±20%	C1608X7R1H474M(080AC)	C1608X7R1V474M(080AB)	C1608X7R1E474M(080AB)	C1608X7R1C474M(080AC)	
2012		1.25±0.10	±10%	C2012X7R1H474K(125AB)					
			±20%	C2012X7R1H474M(125AB)					
680nF		1608	0.80±0.10	±10%					C1608X7R1C684K(080AC)
				±20%					C1608X7R1C684M(080AC)
	2012	1.25±0.10	±10%	C2012X7R1H684K(125AB)					
			±20%	C2012X7R1H684M(125AB)					
	1µF	1608	0.80±0.10	±10%					C1608X7R1C105K(080AC)
				±20%					C1608X7R1C105M(080AC)
		0.85±0.10	±10%	C2012X7R1H105K(085AC)	C2012X7R1V105K(085AB)	C2012X7R1E105K(085AB)	C2012X7R1C105K(085AA)		
			±20%	C2012X7R1H105M(085AC)	C2012X7R1V105M(085AB)	C2012X7R1E105M(085AB)	C2012X7R1C105M(085AA)		
2012		1.25±0.10	±10%	C2012X7R1H105K(125AB)					
			±20%	C2012X7R1H105M(125AB)					
1.5µF	3216	1.60±0.10	±10%					C2012X7R1E105K(125AB)	
			±20%					C2012X7R1E105M(125AB)	
	2012	1.25±0.10	±10%	C2012X7R1H155K(125AC)	C2012X7R1V155K(125AB)				
			±20%	C2012X7R1H155M(125AC)	C2012X7R1V155M(125AB)				
		1.25±0.20	±10%					C2012X7R1E155K(125AB)	
			±20%					C2012X7R1E155M(125AB)	
2.2µF	3216	1.60±0.10	±10%	C3216X7R1H155K(160AB)					
			±20%	C3216X7R1H155M(160AB)					
	2012	0.85±0.10	±10%					C2012X7R1C155K(125AB)	
			±20%					C2012X7R1C155M(125AB)	
		1.25±0.20	±10%	C2012X7R1H225K(125AC)	C2012X7R1V225K(125AB)	C2012X7R1E225K(125AB)	C2012X7R1C225K(125AB)		
			±20%	C2012X7R1H225M(125AC)	C2012X7R1V225M(125AB)	C2012X7R1E225M(125AB)	C2012X7R1C225M(125AB)		
3216	1.60±0.20	±10%	C3216X7R1H225K(160AB)						
		±20%	C3216X7R1H225M(160AB)						
3.3µF	2012	1.25±0.20	±10%					C2012X7R1C335K(125AB)	
			±20%					C2012X7R1C335M(125AB)	
	3216	1.60±0.10	±10%	C3216X7R1H335K(160AC)	C3216X7R1V335K(160AB)				
			±20%	C3216X7R1H335M(160AC)	C3216X7R1V335M(160AB)				

●要了解没有记载的电容量及产品说明, 请向本公司询问。

● RoHS 指令的对应: 表示除了依据 EU Directive 2002/95/EC 免除的用途之外, 未使用铅, 镉, 汞, 六价铬及特定溴系难燃剂 PBB, PBDE 等。

· 记载内容, 在没有予告的情况下有可能改进和变更, 请予以谅解。  
使用本商品目录时, 请务必阅读开头的注意事项。

**电容取得范围: 种类2 (高介电率类)**

**温度特性: X7R(±15%)**

电容	尺寸 L×W	产品厚度 T(mm)	电容 容差	品名			
				额定电压 Edc: 50V	额定电压 Edc: 35V	额定电压 Edc: 25V	额定电压 Edc: 16V
4.7μF	2012	1.25±0.20	±10%	C2012X7R1V475K(125AC)	C2012X7R1E475K(125AB)	C2012X7R1C475K(125AB)	
			±20%	C2012X7R1V475M(125AC)	C2012X7R1E475M(125AB)	C2012X7R1C475M(125AB)	
		0.85±0.10	±10%	C3216X7R1V475K(085AC)	C3216X7R1E475K(085AB)	C3216X7R1C475K(085AB)	
			±20%	C3216X7R1V475M(085AC)	C3216X7R1E475M(085AB)	C3216X7R1C475M(085AB)	
	3216	1.60±0.10	±10%		C3216X7R1E475K(160AC)		
			±20%		C3216X7R1E475M(160AC)		
		1.60±0.20	±10%	C3216X7R1V475K(160AB)			
			±20%	C3216X7R1V475M(160AB)			
3225	2.50±0.20	±10%	C3225X7R1H475K(250AB)				
		±20%	C3225X7R1H475M(250AB)				
6.8μF	3216	1.60±0.10	±10%	C3216X7R1V685K(160AC)	C3216X7R1E685K(160AB)	C3216X7R1C685K(160AC)	
			±20%	C3216X7R1V685M(160AC)	C3216X7R1E685M(160AB)	C3216X7R1C685M(160AC)	
	4532	2.50±0.30	±10%	C4532X7R1H685K(250KB)			
		±20%	C4532X7R1H685M(250KB)				
10μF	3216	1.60±0.10	±10%				C3216X7R1C106K(160AB)
			±20%				C3216X7R1C106M(160AB)
	1.60±0.20	±10%		C3216X7R1V106K(160AC)	C3216X7R1E106K(160AB)		
		±20%		C3216X7R1V106M(160AC)	C3216X7R1E106M(160AB)		
	3225	2.50±0.20	±10%				C3225X7R1E106K(250AC)
			±20%				C3225X7R1E106M(250AC)
4532	2.50±0.30	±10%				C4532X7R1E106K(250KA)	
		±20%				C4532X7R1E106M(250KA)	
15μF	3225	2.50±0.30	±20%				C3225X7R1C156M(250AB)
	4532	2.50±0.30	±20%				C4532X7R1E156M(250KC)
	3225	2.50±0.30	±20%				C3225X7R1C226M(250AC)
22μF	4532	2.00±0.20	±20%				C4532X7R1C226M(200KC)
	2.50±0.30	±20%					C4532X7R1E226M(250KC)
		±20%					C5750X7R1E226M(250KA)
5750	2.30±0.20	±10%	C5750X7R1H106K(230KB)				
		±20%	C5750X7R1H106M(230KB)				
33μF	4532	2.50±0.30	±20%				C4532X7R1C336M(250KC)
	5750	2.00±0.20	±20%				C5750X7R1C336M(200KB)
	47μF	5750	2.30±0.20	±20%			C5750X7R1C476M(230KB)

**温度特性: X7R(±15%)**

电容	尺寸 L×W	产品厚度 T(mm)	电容 容差	品名		
				额定电压 Edc: 10V	额定电压 Edc: 6.3V	额定电压 Edc: 4V
100pF	0402	0.20±0.02	±10%	C0402X7R1A101K(020BA)		
			±20%	C0402X7R1A101M(020BA)		
150pF	0402	0.20±0.02	±10%	C0402X7R1A151K(020BA)		
			±20%	C0402X7R1A151M(020BA)		
220pF	0402	0.20±0.02	±10%	C0402X7R1A221K(020BA)		
			±20%	C0402X7R1A221M(020BA)		
330pF	0402	0.20±0.02	±10%	C0402X7R1A331K(020BA)		
			±20%	C0402X7R1A331M(020BA)		
470pF	0402	0.20±0.02	±10%	C0402X7R1A471K(020BA)		
			±20%	C0402X7R1A471M(020BA)		
680pF	0402	0.20±0.02	±10%	C0402X7R1A681K(020BA)		
			±20%	C0402X7R1A681M(020BA)		
220nF	1005	0.50±0.05	±10%	C1005X7R1A224K(050BB)		
			±20%	C1005X7R1A224M(050BB)		
1.5μF	1608	0.80±0.10	±10%	C1608X7R1A155K(080AC)	C1608X7R0J155K(080AB)	
			±20%	C1608X7R1A155M(080AC)	C1608X7R0J155M(080AB)	
2.2μF	1608	0.80±0.10	±10%	C1608X7R1A225K(080AC)	C1608X7R0J225K(080AB)	
			±20%	C1608X7R1A225M(080AC)	C1608X7R0J225M(080AB)	
4.7μF	2012	0.85±0.10	±10%	C2012X7R1A475K(085AC)	C2012X7R0J475K(085AB)	
			±20%	C2012X7R1A475M(085AC)	C2012X7R0J475M(085AB)	
		1.25±0.10	±10%	C2012X7R1A475K(125AC)		
			±20%	C2012X7R1A475M(125AC)		
6.8μF	2012	1.25±0.10	±10%	C2012X7R1A685K(125AC)		
			±20%	C2012X7R1A685M(125AC)		
10μF	2012	1.25±0.20	±10%	C2012X7R1A106K(125AC)		
			±20%	C2012X7R1A106M(125AC)		
	3216	0.85±0.10	±10%	C3216X7R1A106K(085AC)	C3216X7R0J106K(085AB)	
			±20%	C3216X7R1A106M(085AC)	C3216X7R0J106M(085AB)	

●要了解没有记载的电容量及产品说明, 请向本公司询问。

● RoHS 指令的对应: 表示除了依据 EU Directive 2002/95/EC 免除的用途之外, 未使用铅, 镉, 汞, 六价铬及特定溴系难燃剂 PBB, PBDE 等。

· 记载内容, 在没有予告的情况下有可能改进和变更, 请予以谅解。  
使用本商品目录时, 请务必阅读开头的注意事项。

**电容取得范围: 种类2 (高介电率类)**
**温度特性: X7S(±22%)**

电容	尺寸 L×W	产品厚度 T(mm)	电容 容差	品名			
				额定电压 Edc: 50V	额定电压 Edc: 35V	额定电压 Edc: 25V	额定电压 Edc: 16V
6.8μF	3225	2.50±0.20	±10%	C3225X7S1H685K(250AB)			
			±20%	C3225X7S1H685M(250AB)			
10μF	3225	2.50±0.20	±10%	C3225X7S1H106K(250AB)			
			±20%	C3225X7S1H106M(250AB)			

**温度特性: X7S(±22%)**

电容	尺寸 L×W	产品厚度 T(mm)	电容 容差	品名		
				额定电压 Edc: 10V	额定电压 Edc: 6.3V	额定电压 Edc: 4V
100nF	0603	0.30±0.03	±10%	C0603X7S0G104K(030BC)		
			±20%	C0603X7S0G104M(030BC)		
220nF	0603	0.30±0.03	±10%	C0603X7S0G224K(030BC)		
			±20%	C0603X7S0G224M(030BC)		
470nF	1005	0.50±0.05	±10%	C1005X7S1A474K(050BC)	C1005X7S0J474K(050BB)	
			±20%	C1005X7S1A474M(050BC)	C1005X7S0J474M(050BB)	
1μF	1005	0.50±0.05	±10%	C1005X7S0G105K(050BC)		
			±20%	C1005X7S0G105M(050BC)		
2.2μF	1608	0.80±0.10	±10%	C1608X7S1A225K(080AC)	C1608X7S0J225K(080AB)	
			±20%	C1608X7S1A225M(080AC)	C1608X7S0J225M(080AB)	
4.7μF	1608	0.80±0.10	±10%	C1608X7S0G475K(080AC)		
			±20%	C1608X7S0G475M(080AC)		
10μF	2012	0.85±0.10	±10%	C2012X7S0G106K(085AC)		
			±20%	C2012X7S0G106M(085AC)		
47μF	3225	2.50±0.30	±20%	C3225X7S0J476M(250AC)		

●要了解没有记载的电容量及产品说明, 请向本公司询问。

● RoHS 指令的对应: 表示除了依据 EU Directive 2002/95/EC 免除的用途之外, 未使用铅, 镉, 汞, 六价铬及特定溴系难燃剂 PBB, PBDE 等。

· 记载内容, 在没有予告的情况下有可能改进和变更, 请予以谅解。  
使用本商品目录时, 请务必阅读开头的注意事项。

**电容取得范围: 种类2 (高介电率类)**
**温度特性: JB(±10%)**

电容	尺寸 L×W	产品厚度 T(mm)	电容 容差	品名			
				额定电压 Edc: 50V	额定电压 Edc: 35V	额定电压 Edc: 25V	额定电压 Edc: 16V
100pF	0402	0.20±0.02	±10%				C0402JB1C101K(020BA)
			±20%				C0402JB1C101M(020BA)
	0603	0.30±0.03	±10%			C0603JB1E101K(030BA)	
			±20%			C0603JB1E101M(030BA)	
150pF	0402	0.20±0.02	±10%				C0402JB1C151K(020BA)
			±20%				C0402JB1C151M(020BA)
	0603	0.30±0.03	±10%			C0603JB1E151K(030BA)	
			±20%			C0603JB1E151M(030BA)	
220pF	0402	0.20±0.02	±10%				C0402JB1C221K(020BA)
			±20%				C0402JB1C221M(020BA)
	0603	0.30±0.03	±10%			C0603JB1E221K(030BA)	
			±20%			C0603JB1E221M(030BA)	
1005	0.50±0.05	±10%	C1005JB1H221K(050BA)				
		±20%	C1005JB1H221M(050BA)				
330pF	0402	0.20±0.02	±10%				C0402JB1C331K(020BA)
			±20%				C0402JB1C331M(020BA)
	0603	0.30±0.03	±10%			C0603JB1E331K(030BA)	
			±20%			C0603JB1E331M(030BA)	
1005	0.50±0.05	±10%	C1005JB1H331K(050BA)				
		±20%	C1005JB1H331M(050BA)				
470pF	0402	0.20±0.02	±10%				C0402JB1C471K(020BA)
			±20%				C0402JB1C471M(020BA)
	0603	0.30±0.03	±10%			C0603JB1E471K(030BA)	
			±20%			C0603JB1E471M(030BA)	
1005	0.50±0.05	±10%	C1005JB1H471K(050BA)				
		±20%	C1005JB1H471M(050BA)				
680pF	0402	0.20±0.02	±10%				C0402JB1C681K(020BA)
			±20%				C0402JB1C681M(020BA)
	0603	0.30±0.03	±10%			C0603JB1E681K(030BA)	
			±20%			C0603JB1E681M(030BA)	
1005	0.50±0.05	±10%	C1005JB1H681K(050BA)				
		±20%	C1005JB1H681M(050BA)				
1nF	0603	0.30±0.03	±10%			C0603JB1E102K(030BA)	
			±20%			C0603JB1E102M(030BA)	
	1005	0.50±0.05	±10%	C1005JB1H102K(050BA)			
			±20%	C1005JB1H102M(050BA)			
1.5nF	0603	0.30±0.03	±10%			C0603JB1E152K(030BA)	
			±20%			C0603JB1E152M(030BA)	
	1005	0.50±0.05	±10%	C1005JB1H152K(050BA)			
			±20%	C1005JB1H152M(050BA)			
2.2nF	0603	0.30±0.03	±10%			C0603JB1E222K(030BA)	
			±20%			C0603JB1E222M(030BA)	
	1005	0.50±0.05	±10%	C1005JB1H222K(050BA)			
			±20%	C1005JB1H222M(050BA)			
3.3nF	0603	0.30±0.03	±10%			C0603JB1E332K(030BA)	
			±20%			C0603JB1E332M(030BA)	
	1005	0.50±0.05	±10%	C1005JB1H332K(050BA)			
			±20%	C1005JB1H332M(050BA)			
4.7nF	0603	0.30±0.03	±10%				C0603JB1C472K(030BA)
			±20%				C0603JB1C472M(030BA)
	1005	0.50±0.05	±10%	C1005JB1H472K(050BA)			
			±20%	C1005JB1H472M(050BA)			
6.8nF	1005	0.50±0.05	±10%	C1005JB1H682K(050BA)			
			±20%	C1005JB1H682M(050BA)			
10nF	1005	0.50±0.05	±10%	C1005JB1H103K(050BB)			
			±20%	C1005JB1H103M(050BB)			
	1608	0.80±0.10	±10%	C1608JB1H103K(080AA)			
			±20%	C1608JB1H103M(080AA)			
15nF	1005	0.50±0.05	±10%	C1005JB1H153K(050BB)			
			±20%	C1005JB1H153M(050BB)			
	1608	0.80±0.10	±10%	C1608JB1H153K(080AA)			
			±20%	C1608JB1H153M(080AA)			

●要了解没有记载的电容量及产品说明, 请向本公司询问。

● RoHS 指令的对应: 表示除了依据 EU Directive 2002/95/EC 免除的用途之外, 未使用铅, 镉, 汞, 六价铬及特定溴系难燃剂 PBB, PBDE 等。

· 记载内容, 在没有予告的情况下有可能改进和变更, 请予以谅解。  
使用本商品目录时, 请务必阅读开头的注意事项。



**电容取得范围: 种类2 (高介电率类)**

**温度特性: JB(±10%)**

电容	尺寸 L×W	产品厚度 T(mm)	电容 容差	品名			
				额定电压 Edc: 50V	额定电压 Edc: 35V	额定电压 Edc: 25V	额定电压 Edc: 16V
22nF	1005	0.50±0.05	±10%	C1005JB1H223K(050BB)			
			±20%	C1005JB1H223M(050BB)			
	1608	0.80±0.10	±10%	C1608JB1H223K(080AA)			
			±20%	C1608JB1H223M(080AA)			
33nF	1005	0.50±0.05	±10%	C1005JB1H333K(050BB)			
			±20%	C1005JB1H333M(050BB)			
	1608	0.80±0.10	±10%	C1608JB1H333K(080AA)			
			±20%	C1608JB1H333M(080AA)			
47nF	1005	0.50±0.05	±10%	C1005JB1H473K(050BB)			
			±20%	C1005JB1H473M(050BB)			
	1608	0.80±0.10	±10%	C1608JB1H473K(080AA)			
			±20%	C1608JB1H473M(080AA)			
68nF	1005	0.50±0.05	±10%	C1005JB1H683K(050BB)	C1005JB1V683K(050BB)	C1005JB1E683K(050BB)	
			±20%	C1005JB1H683M(050BB)	C1005JB1V683M(050BB)	C1005JB1E683M(050BB)	
	1608	0.80±0.10	±10%	C1608JB1H683K(080AA)			
			±20%	C1608JB1H683M(080AA)			
100nF	0603	0.30±0.03	±10%	C0603JB1C104K(030BC)			
			±20%	C0603JB1C104M(030BC)			
	1005	0.50±0.05	±10%	C1005JB1H104K(050BB)	C1005JB1V104K(050BB)	C1005JB1E104K(050BB)	C1005JB1C104K(050BA)
			±20%	C1005JB1H104M(050BB)	C1005JB1V104M(050BB)	C1005JB1E104M(050BB)	C1005JB1C104M(050BA)
	1608	0.80±0.10	±10%	C1608JB1H104K(080AA)			
			±20%	C1608JB1H104M(080AA)			
2012	0.85±0.10	±10%	C2012JB1H104K(085AA)				
		±20%	C2012JB1H104M(085AA)				
150nF	1005	0.50±0.05	±10%			C1005JB1E154K(050BC)	C1005JB1C154K(050BB)
			±20%			C1005JB1E154M(050BC)	C1005JB1C154M(050BB)
	1608	0.80±0.10	±10%	C1608JB1H154K(080AB)	C1608JB1V154K(080AB)	C1608JB1E154K(080AA)	
			±20%	C1608JB1H154M(080AB)	C1608JB1V154M(080AB)	C1608JB1E154M(080AA)	
	2012	0.85±0.10	±10%	C2012JB1H154K(085AA)			
			±20%	C2012JB1H154M(085AA)			
220nF	0603	0.30±0.03	±10%	C0603JB1C224K(030BC)			
			±20%	C0603JB1C224M(030BC)			
	1005	0.50±0.05	±10%			C1005JB1E224K(050BC)	C1005JB1C224K(050BB)
			±20%			C1005JB1E224M(050BC)	C1005JB1C224M(050BB)
	1608	0.80±0.10	±10%	C1608JB1H224K(080AB)	C1608JB1V224K(080AB)	C1608JB1E224K(080AA)	
			±20%	C1608JB1H224M(080AB)	C1608JB1V224M(080AB)	C1608JB1E224M(080AA)	
2012	1.25±0.10	±10%	C2012JB1H224K(125AA)				
		±20%	C2012JB1H224M(125AA)				
330nF	1005	0.50±0.05	±10%	C1005JB1C334K(050BC)			
			±20%	C1005JB1C334M(050BC)			
	1608	0.80±0.10	±10%	C1608JB1H334K(080AB)	C1608JB1V334K(080AB)	C1608JB1E334K(080AB)	
			±20%	C1608JB1H334M(080AB)	C1608JB1V334M(080AB)	C1608JB1E334M(080AB)	
2012	1.25±0.20	±10%	C2012JB1H334K(125AA)				
		±20%	C2012JB1H334M(125AA)				
470nF	1005	0.50±0.05	±10%			C1005JB1E474K(050BB)	
			±20%			C1005JB1E474M(050BB)	
	1608	0.80±0.10	±10%	C1608JB1H474K(080AB)	C1608JB1V474K(080AB)	C1608JB1E474K(080AB)	C1608JB1C474K(080AA)
			±20%	C1608JB1H474M(080AB)	C1608JB1V474M(080AB)	C1608JB1E474M(080AB)	C1608JB1C474M(080AA)
	2012	1.25±0.10	±10%	C2012JB1H474K(125AB)			
			±20%	C2012JB1H474M(125AB)			
680nF	1005	0.50±0.05	±10%	C1005JB1C684K(050BC)			
			±20%	C1005JB1C684M(050BC)			
	1608	0.80±0.10	±10%	C1608JB1H684K(080AB)	C1608JB1V684K(080AB)	C1608JB1E684K(080AB)	C1608JB1C684K(080AA)
			±20%	C1608JB1H684M(080AB)	C1608JB1V684M(080AB)	C1608JB1E684M(080AB)	C1608JB1C684M(080AA)
	2012	1.25±0.10	±10%	C2012JB1H684K(125AB)			
			±20%	C2012JB1H684M(125AB)			

●要了解没有记载的电容量及产品说明, 请向本公司询问。

● RoHS 指令的对应: 表示除了依据 EU Directive 2002/95/EC 免除的用途之外, 未使用铅, 镉, 汞, 六价铬及特定溴系难燃剂 PBB, PBDE 等。

· 记载内容, 在没有予告的情况下有可能改进和变更, 请予以谅解。  
使用本商品目录时, 请务必阅读开头的注意事项。

**电容取得范围: 种类2 (高介电率类)**

**温度特性: JB(±10%)**

电容	尺寸 L×W	产品厚度 T(mm)	电容 容差	品名				
				额定电压 Edc: 50V	额定电压 Edc: 35V	额定电压 Edc: 25V	额定电压 Edc: 16V	
1μF	1005	0.50±0.05	±10%	C1005JB1C105K(050BC)				
			±20%	C1005JB1C105M(050BC)				
	1608	0.80±0.10	±10%	C1608JB1H105K(080AB)	C1608JB1V105K(080AB)	C1608JB1E105K(080AB)	C1608JB1C105K(080AA)	
			±20%	C1608JB1H105M(080AB)	C1608JB1V105M(080AB)	C1608JB1E105M(080AB)	C1608JB1C105M(080AA)	
	2012	0.85±0.10	±10%	C2012JB1H105K(085AB)	C2012JB1V105K(085AB)	C2012JB1E105K(085AC)	C2012JB1C105K(085AC)	
			±20%	C2012JB1H105M(085AB)	C2012JB1V105M(085AB)	C2012JB1E105M(085AC)	C2012JB1C105M(085AC)	
	3216	1.60±0.10	±10%	C2012JB1H105K(125AB)	C2012JB1E105K(125AA)			
			±20%	C2012JB1H105M(125AB)	C2012JB1E105M(125AA)			
	1.5μF	1608	0.80±0.10	±10%			C1608JB1E155K(080AC)	C1608JB1C155K(080AB)
				±20%			C1608JB1E155M(080AC)	C1608JB1C155M(080AB)
2012		0.85±0.10	±10%	C2012JB1E155K(085AC)				
			±20%	C2012JB1E155M(085AC)				
3216		1.60±0.10	±10%	C2012JB1H155K(125AB)	C2012JB1V155K(125AB)	C2012JB1E155K(125AB)	C2012JB1C155K(125AA)	
			±20%	C2012JB1H155M(125AB)	C2012JB1V155M(125AB)	C2012JB1E155M(125AB)	C2012JB1C155M(125AA)	
2.2μF		1608	0.80±0.10	±10%			C1608JB1E225K(080AC)	C1608JB1C225K(080AB)
				±20%			C1608JB1E225M(080AC)	C1608JB1C225M(080AB)
		2012	0.85±0.10	±10%	C2012JB1H225K(085AB)	C2012JB1V225K(085AB)		
				±20%	C2012JB1H225M(085AB)	C2012JB1V225M(085AB)		
	3216	1.60±0.20	±10%	C2012JB1H225K(125AB)	C2012JB1V225K(125AB)	C2012JB1E225K(125AC)	C2012JB1C225K(125AA)	
			±20%	C2012JB1H225M(125AB)	C2012JB1V225M(125AB)	C2012JB1E225M(125AC)	C2012JB1C225M(125AA)	
	3.3μF	1608	0.80±0.10	±10%			C1608JB1C335K(080AC)	
				±20%			C1608JB1C335M(080AC)	
		2012	0.60±0.10	±10%			C2012JB1C335K(060AC)	
				±20%			C2012JB1C335M(060AC)	
3216		1.60±0.10	±10%	C2012JB1H335K(125AB)	C2012JB1V335K(125AB)	C2012JB1E335K(085AC)	C2012JB1C335K(085AB)	
			±20%	C2012JB1H335M(125AB)	C2012JB1V335M(125AB)	C2012JB1E335M(085AC)	C2012JB1C335M(085AB)	
4.7μF		1608	0.80±0.10	±10%			C1608JB1C475K(080AC)	
				±20%			C1608JB1C475M(080AC)	
		2012	0.60±0.10	±10%			C2012JB1C475K(060AC)	
				±20%			C2012JB1C475M(060AC)	
	3216	1.60±0.10	±10%	C2012JB1H475K(125AB)	C2012JB1V475K(125AB)	C2012JB1E475K(085AC)	C2012JB1C475K(085AB)	
			±20%	C2012JB1H475M(125AB)	C2012JB1V475M(125AB)	C2012JB1E475M(085AC)	C2012JB1C475M(085AB)	
	3216	1.60±0.10	±10%	C3216JB1H475K(085AB)	C3216JB1V475K(085AB)	C2012JB1E475K(125AB)	C2012JB1C475K(125AB)	
			±20%	C3216JB1H475M(085AB)	C3216JB1V475M(085AB)	C2012JB1E475M(125AB)	C2012JB1C475M(125AB)	
	3216	1.60±0.10	±10%			C3216JB1E475K(115AB)		
			±20%			C3216JB1E475M(115AB)		
3216	1.60±0.10	±10%			C3216JB1E475K(160AA)			
		±20%			C3216JB1E475M(160AA)			
3216	1.60±0.20	±10%	C3216JB1H475K(160AB)	C3216JB1V475K(160AB)				
		±20%	C3216JB1H475M(160AB)	C3216JB1V475M(160AB)				
3225	2.50±0.20	±10%	C3225JB1H475K(250AB)					
		±20%	C3225JB1H475M(250AB)					
6.8μF	2012	0.85±0.10	±10%			C2012JB1C685K(085AC)		
			±20%			C2012JB1C685M(085AC)		
	3216	1.60±0.10	±10%	C3216JB1H685K(160AB)	C3216JB1V685K(160AB)	C3216JB1E685K(160AB)	C2012JB1C685K(125AB)	
			±20%	C3216JB1H685M(160AB)	C3216JB1V685M(160AB)	C3216JB1E685M(160AB)	C2012JB1C685M(125AB)	
	4532	2.50±0.30	±10%	C4532JB1H685K(250KA)				
			±20%	C4532JB1H685M(250KA)				

●要了解没有记载的电容量及产品说明, 请向本公司询问。

● RoHS 指令的对应: 表示除了依据 EU Directive 2002/95/EC 免除的用途之外, 未使用铅, 镉, 汞, 六价铬及特定溴系难燃剂 PBB, PBDE 等。

· 记载内容, 在没有予告的情况下有可能改进和变更, 请予以谅解。  
使用本商品目录时, 请务必阅读开头的注意事项。

**电容取得范围: 种类2 (高介电率类)**
**温度特性: JB(±10%)**

电容	尺寸 L×W	产品厚度 T(mm)	电容 容差	品名					
				额定电压 Edc: 50V	额定电压 Edc: 35V	额定电压 Edc: 25V	额定电压 Edc: 16V		
10μF	2012	0.85±0.10	±10%				C2012JB1C106K(085AC)		
			±20%				C2012JB1C106M(085AC)		
		1.25±0.10	±10%			C2012JB1E106K(125AC)	C2012JB1C106K(125AB)		
			±20%			C2012JB1E106M(125AC)	C2012JB1C106M(125AB)		
	3216	0.85±0.10	±10%			C3216JB1E106K(085AC)	C3216JB1C106K(085AB)		
			±20%			C3216JB1E106M(085AC)	C3216JB1C106M(085AB)		
		1.60±0.10	±10%				C3216JB1C106K(160AC)		
			±20%				C3216JB1C106M(160AA)		
	3225	2.50±0.20	1.60±0.20	±10%	C3216JB1H106K(160AB)	C3216JB1V106K(160AB)	C3216JB1E106K(160AB)		
				±20%	C3216JB1H106M(160AB)	C3216JB1V106M(160AB)	C3216JB1E106M(160AB)		
			4532	2.50±0.30	±10%			C3225JB1E106K(250AA)	
					±20%			C3225JB1E106M(250AA)	
15μF	2012	1.25±0.10	±10%				C4532JB1E106K(250KA)		
			±20%				C4532JB1E106M(250KA)		
	3216	1.60±0.20	±10%				C4532JB1E156M(250KA)		
			±20%						
		3225	2.50±0.20	±10%				C2012JB1C156M(125AC)	
				±20%				C2012JB1C156M(160AB)	
22μF	4532	2.50±0.30	±10%				C3225JB1C156M(250AA)		
			±20%						
	5750	2.50±0.30	±10%				C3216JB1E226M(160AC)		
			±20%				C3216JB1C226M(160AB)		
33μF	3216	1.60±0.20	±10%				C3225JB1C226M(250AA)		
			±20%				C4532JB1C226M(200KA)		
47μF	3216	1.60±0.20	±10%				C4532JB1E226M(250KA)		
			±20%				C5750JB1E226M(250KA)		
33μF	3216	1.60±0.20	±10%				C3216JB1C336M(160AB)		
			±20%				C4532JB1C336M(250KA)		
47μF	3216	1.60±0.20	±20%				C3216JB1C476M(160AB)		

●要了解没有记载的电容量及产品说明, 请向本公司询问。

●RoHS指令的对应: 表示除了依据EU Directive 2002/95/EC免除的用途之外, 未使用铅, 镉, 汞, 六价铬及特定溴系难燃剂PBB, PBDE等。

·记载内容, 在没有予告的情况下有可能改进和变更, 请予以谅解。  
使用本商品目录时, 请务必阅读开头的注意事项。

**电容取得范围: 种类2 (高介电率类)**
**温度特性: JB(±10%)**

电容	尺寸 L×W	产品厚度 T(mm)	电容 容差	品名		
				额定电压 Edc: 10V	额定电压 Edc: 6.3V	额定电压 Edc: 4V
1nF	0402	0.20±0.02	±10%	C0402JB1A102K(020BA)		
			±20%	C0402JB1A102M(020BA)		
1.5nF	0402	0.20±0.02	±10%	C0402JB1A152K(020BA)		
			±20%	C0402JB1A152M(020BA)		
2.2nF	0402	0.20±0.02	±10%	C0402JB1A222K(020BA)		
			±20%	C0402JB1A222M(020BA)		
3.3nF	0402	0.20±0.02	±10%		C0402JB0J332K(020BA)	
			±20%		C0402JB0J332M(020BA)	
4.7nF	0402	0.20±0.02	±10%		C0402JB0J472K(020BB)	
			±20%		C0402JB0J472M(020BB)	
6.8nF	0402	0.20±0.02	±10%		C0402JB0J682K(020BB)	
			±20%		C0402JB0J682M(020BB)	
	0603	0.30±0.03	±10%	C0603JB1A682K(030BB)		
			±20%	C0603JB1A682M(030BB)		
10nF	0402	0.20±0.02	±10%		C0402JB0J103K(020BB)	
			±20%		C0402JB0J103M(020BB)	
	0603	0.30±0.03	±10%	C0603JB1A103K(030BB)		
			±20%	C0603JB1A103M(030BB)		
15nF	0603	0.30±0.03	±10%	C0603JB1A153K(030BB)		
			±20%	C0603JB1A153M(030BB)		
22nF	0603	0.30±0.03	±10%	C0603JB1A223K(030BB)		
			±20%	C0603JB1A223M(030BB)		
33nF	0603	0.30±0.03	±10%	C0603JB1A333K(030BB)		
			±20%	C0603JB1A333M(030BB)		
47nF	0603	0.30±0.03	±10%	C0603JB1A473K(030BB)		
			±20%	C0603JB1A473M(030BB)		
68nF	0603	0.30±0.03	±10%	C0603JB1A683K(030BB)		
			±20%	C0603JB1A683M(030BB)		
100nF	0603	0.30±0.03	±10%	C0603JB1A104K(030BB)		
			±20%	C0603JB1A104M(030BB)		
150nF	0603	0.30±0.03	±10%	C0603JB1A154K(030BB)		
			±20%	C0603JB1A154M(030BB)		
220nF	0603	0.30±0.03	±10%	C0603JB1A224K(030BB)		
			±20%	C0603JB1A224M(030BB)		
330nF	1005	0.50±0.05	±10%	C1005JB1A334K(050BC)		
			±20%	C1005JB1A334M(050BC)		
470nF	1005	0.50±0.05	±10%	C1005JB1A474K(050BC)		
			±20%	C1005JB1A474M(050BC)		
680nF	1005	0.50±0.05	±10%	C1005JB1A684K(050BB)		
			±20%	C1005JB1A684M(050BB)		
1μF	1005	0.50±0.05	±10%	C1005JB1A105K(050BB)	C1005JB0J105K(050BC)	
			±20%	C1005JB1A105M(050BB)	C1005JB0J105M(050BC)	
1.5μF	1005	0.50±0.05	±10%	C1005JB1A155K(050BC)	C1005JB0J155K(050BB)	
			±20%	C1005JB1A155M(050BC)	C1005JB0J155M(050BB)	
2.2μF	1005	0.50±0.05	±10%	C1005JB1A225K(050BC)	C1005JB0J225K(050BC)	C1005JB0G225K(050BB)
			±20%	C1005JB1A225M(050BC)	C1005JB0J225M(050BB)	C1005JB0G225M(050BB)
	1608	0.80±0.10	±10%	C1608JB1A225K(080AC)	C1608JB0J225K(080AB)	
			±20%	C1608JB1A225M(080AC)	C1608JB0J225M(080AB)	

●要了解没有记载的电容量及产品说明, 请向本公司询问。

● RoHS 指令的对应: 表示除了依据 EU Directive 2002/95/EC 免除的用途之外, 未使用铅, 镉, 汞, 六价铬及特定溴系阻燃剂 PBB, PBDE 等。

· 记载内容, 在没有予告的情况下有可能改进和变更, 请予以谅解。  
使用本商品目录时, 请务必阅读开头的注意事项。

**电容取得范围: 种类2 (高介电率类)**
**温度特性: JB(±10%)**

电容	尺寸 L×W	产品厚度 T(mm)	电容 容差	品名		
				额定电压 Edc: 10V	额定电压 Edc: 6.3V	额定电压 Edc: 4V
3.3μF	1005	0.50±0.10	±20%	C1005JB0J335M(050BC)	C1005JB0G335M(050BB)	
			±10%	C1608JB0J335K(080AB)		
	1608	0.80+0.15/-0.10	±20%	C1608JB0J335M(080AB)		
			±10%	C1608JB1A335K(080AB)		
	1608	0.80±0.10	±20%	C1608JB1A335M(080AB)		
			±10%			
4.7μF	1005	0.50+0.15/-0.10	±20%	C1005JB0J475M(050BC)	C1005JB0G475M(050BB)	
			±10%	C1608JB1A475K(080AB)	C1608JB0J475K(080AB)	
	1608	0.80±0.10	±20%	C1608JB1A475M(080AB)	C1608JB0J475M(080AB)	
			±10%	C2012JB1A475K(060AB)		
	2012	0.60±0.10	±20%	C2012JB1A475M(060AB)		
			±10%	C2012JB1A475K(125AA)		
2012	1.25±0.10	±20%	C2012JB1A475M(125AA)			
		±10%				
6.8μF	1608	0.80±0.10	±10%	C1608JB1A685K(080AC)	C1608JB0J685K(080AB)	
			±20%	C1608JB1A685M(080AC)	C1608JB0J685M(080AB)	
	2012	0.60±0.10	±10%	C2012JB1A685K(060AC)		
			±20%	C2012JB1A685M(060AC)		
	2012	1.25±0.10	±10%	C2012JB1A685K(125AC)		
			±20%	C2012JB1A685M(125AC)		
10μF	1608	0.80±0.10	±10%	C1608JB1A106K(080AC)	C1608JB0J106K(080AB)	
			±20%	C1608JB1A106M(080AC)	C1608JB0J106M(080AB)	
	2012	0.85±0.10	±10%	C2012JB1A106K(085AB)		
			±20%	C2012JB1A106M(085AB)		
	2012	1.25±0.20	±10%	C2012JB1A106K(125AC)		
			±20%	C2012JB1A106M(125AC)		
2012	0.85±0.10	±20%	C2012JB1A156M(085AC)			
		±20%	C2012JB1A156M(125AB)			
22μF	2012	0.85±0.10	±20%	C2012JB1A226M(085AC)	C2012JB0J226M(085AB)	
			±20%	C2012JB1A226M(125AB)	C2012JB0J226M(125AB)	
	3216	1.60±0.20	±20%	C3216JB1A226M(160AC)		
33μF	2012	1.25±0.20	±20%		C2012JB0J336M(125AC)	
	3216	1.60±0.20	±20%	C3216JB1A336M(160AB)		
47μF	2012	1.25±0.20	±20%		C2012JB0J476M(125AC)	
	3216	1.60±0.20	±20%	C3216JB1A476M(160AB)	C3216JB0J476M(160AC)	
68μF	3216	1.60±0.20	±20%	C3216JB1A686M(160AC)	C3216JB0J686M(160AB)	
	3225	2.00±0.20	±20%		C3225JB0J686M(200AC)	
100μF	3216	1.60+0.30/-0.10	±20%	C3216JB1A107M(160AC)	C3216JB0J107M(160AB)	
	3225	2.50±0.30	±20%		C3225JB0J107M(250AC)	

●要了解没有记载的电容量及产品说明, 请向本公司询问。

● RoHS 指令的对应: 表示除了依据 EU Directive 2002/95/EC 免除的用途之外, 未使用铅, 镉, 汞, 六价铬及特定溴系难燃剂 PBB, PBDE 等。

· 记载内容, 在没有予告的情况下有可能改进和变更, 请予以谅解。  
使用本商品目录时, 请务必阅读开头的注意事项。

**电容取得范围: 种类2 (高介电率类)**
**温度特性: Y5V(+22, -82%)**

电容	尺寸 L×W	产品厚度 T(mm)	电容 容差	品名			
				额定电压 Edc: 50V	额定电压 Edc: 35V	额定电压 Edc: 25V	额定电压 Edc: 16V
100nF	1005	0.50±0.05	+80%, -20%	C1005Y5V1E104Z(050BA)			
	1608	0.80±0.10	+80%, -20%	C1608Y5V1H104Z(080AA)			
220nF	1005	0.50±0.05	+80%, -20%	C1005Y5V1E224Z(050BA)			
	1608	0.80±0.10	+80%, -20%	C1608Y5V1H224Z(080AA)			
470nF	1608	0.80±0.10	+80%, -20%	C1608Y5V1H474Z(080AA)			
	1608	0.80±0.10	+80%, -20%	C1608Y5V1E105Z(080AA)			
1μF	2012	0.85±0.10	+80%, -20%	C2012Y5V1H105Z(085AA)			
	1608	0.80±0.10	+80%, -20%	C1608Y5V1C225Z(080AA)			
2.2μF	2012	1.25±0.10	+80%, -20%	C2012Y5V1H225Z(125AA)			
	2012	1.25±0.20	+80%, -20%	C2012Y5V1E475Z(125AA)			
4.7μF	3216	1.60±0.10	+80%, -20%	C3216Y5V1H475Z(160AA)			
	2012	1.25±0.20	+80%, -20%	C2012Y5V1C106Z(125AA)			
10μF	3216	1.60±0.20	+80%, -20%	C3216Y5V1E106Z(160AA)			
	3225	1.60±0.20	+80%, -20%	C3225Y5V1H106Z(160AA)			
22μF	3216	1.60±0.20	+80%, -20%	C3216Y5V1C226Z(160AA)			
	3225	2.00±0.20	+80%, -20%	C3225Y5V1E226Z(200AA)			
5750	2.00±0.20	+80%, -20%	C5750Y5V1H226Z(200KA)				
	3225	2.30±0.20	+80%, -20%	C3225Y5V1C476Z(230AA)			
47μF	5750	2.00±0.20	+80%, -20%	C5750Y5V1E476Z(200KA)			
	100μF	5750	2.50±0.30	+80%, -20%	C5750Y5V1C107Z(250KA)		

**温度特性: Y5V(+22, -82%)**

电容	尺寸 L×W	产品厚度 T(mm)	电容 容差	品名		
				额定电压 Edc: 10V	额定电压 Edc: 6.3V	额定电压 Edc: 4V
470nF	1005	0.50±0.05	+80%, -20%	C1005Y5V1A474Z(050BA)		
1μF	1005	0.50±0.05	+80%, -20%	C1005Y5V0J105Z(050BA)		
	1608	0.80±0.10	+80%, -20%	C1608Y5V0J475Z(080AA)		
22μF	2012	1.25±0.20	+80%, -20%	C2012Y5V0J226Z(125AA)		
	3216	1.60±0.30/-0.10	+80%, -20%	C3216Y5V0J476Z(160AA)		
47μF	3225	2.00±0.20	+80%, -20%	C3225Y5V1A476Z(200AA)		
	3225	2.50±0.30	+80%, -20%	C3225Y5V0J107Z(250AA)		
100μF	4532	2.50±0.30	+80%, -20%	C4532Y5V1A107Z(250KA)		

●要了解没有记载的电容量及产品说明, 请向本公司询问。

● RoHS 指令的对应: 表示除了依据 EU Directive 2002/95/EC 免除的用途之外, 未使用铅, 镉, 汞, 六价铬及特定溴系难燃剂 PBB, PBDE 等。

· 记载内容, 在没有予告的情况下有可能改进和变更, 请予以谅解。  
使用本商品目录时, 请务必阅读开头的注意事项。

**电容取得范围: 种类2 (高介电率类)**
**温度特性: JF(+30, -80%)**

电容	尺寸 L×W	产品厚度 T(mm)	电容 容差	品名			
				额定电压 Edc: 50V	额定电压 Edc: 35V	额定电压 Edc: 25V	额定电压 Edc: 16V
100nF	1005	0.50±0.05	+80%, -20%	C1005JF1E104Z(050BA)			
	1608	0.80±0.10	+80%, -20%	C1608JF1H104Z(080AA)			
220nF	1005	0.50±0.05	+80%, -20%	C1005JF1E224Z(050BA)			
	1608	0.80±0.10	+80%, -20%	C1608JF1H224Z(080AA)			
470nF	1608	0.80±0.10	+80%, -20%	C1608JF1H474Z(080AA)			
	1608	0.80±0.10	+80%, -20%	C1608JF1E105Z(080AA)			
1μF	2012	0.85±0.10	+80%, -20%	C2012JF1H105Z(085AA)			
	1608	0.80±0.10	+80%, -20%	C1608JF1C225Z(080AA)			
2.2μF	2012	1.25±0.10	+80%, -20%	C2012JF1H225Z(125AA)			
	2012	1.25±0.20	+80%, -20%	C2012JF1E475Z(125AA)			
4.7μF	3216	1.60±0.10	+80%, -20%	C3216JF1H475Z(160AA)			
	2012	1.25±0.20	+80%, -20%	C2012JF1C106Z(125AA)			
10μF	3216	1.60±0.20	+80%, -20%	C3216JF1E106Z(160AA)			
	3225	1.60±0.20	+80%, -20%	C3225JF1H106Z(160AA)			
	3216	1.60±0.20	+80%, -20%	C3216JF1C226Z(160AA)			
22μF	3225	2.00±0.20	+80%, -20%	C3225JF1E226Z(200AA)			
	5750	2.00±0.20	+80%, -20%	C5750JF1H226Z(200KA)			
47μF	3225	2.30±0.20	+80%, -20%	C3225JF1C476Z(230AA)			
	5750	2.00±0.20	+80%, -20%	C5750JF1E476Z(200KA)			
100μF	5750	2.50±0.30	+80%, -20%	C5750JF1C107Z(250KA)			

**温度特性: JF(+30, -80%)**

电容	尺寸 L×W	产品厚度 T(mm)	电容 容差	品名		
				额定电压 Edc: 10V	额定电压 Edc: 6.3V	额定电压 Edc: 4V
470nF	1005	0.50±0.05	+80%, -20%	C1005JF1A474Z(050BA)		
1μF	1005	0.50±0.05	+80%, -20%	C1005JF0J105Z(050BA)		
	1608	0.80±0.10	+80%, -20%	C1608JF0J475Z(080AA)		
22μF	2012	1.25±0.20	+80%, -20%	C2012JF0J226Z(125AA)		
	3216	1.60±0.30/-0.10	+80%, -20%	C3216JF0J476Z(160AA)		
47μF	3225	2.00±0.20	+80%, -20%	C3225JF1A476Z(200AA)		
	3225	2.50±0.30	+80%, -20%	C3225JF0J107Z(250AA)		
100μF	4532	2.50±0.30	+80%, -20%	C4532JF1A107Z(250KA)		

●要了解没有记载的电容量及产品说明, 请向本公司询问。

● RoHS 指令的对应: 表示除了依据 EU Directive 2002/95/EC 免除的用途之外, 未使用铅, 镉, 汞, 六价铬及特定溴系难燃剂 PBB, PBDE 等。

· 记载内容, 在没有予告的情况下有可能改进和变更, 请予以谅解。  
使用本商品目录时, 请务必阅读开头的注意事项。